



Transportation Alternatives Design Assistance TA 2018 – Grove Avenue and Eggert Avenue Bicycle Lanes Borough of Metuchen, Middlesex County, NJ

Preliminary Engineering (PE) Phase
NJDOT Local Aid Design Assistance

Virtual Public Information Center (PIC)
Wednesday, October 6, 2021 - 6:00PM – 8:00PM

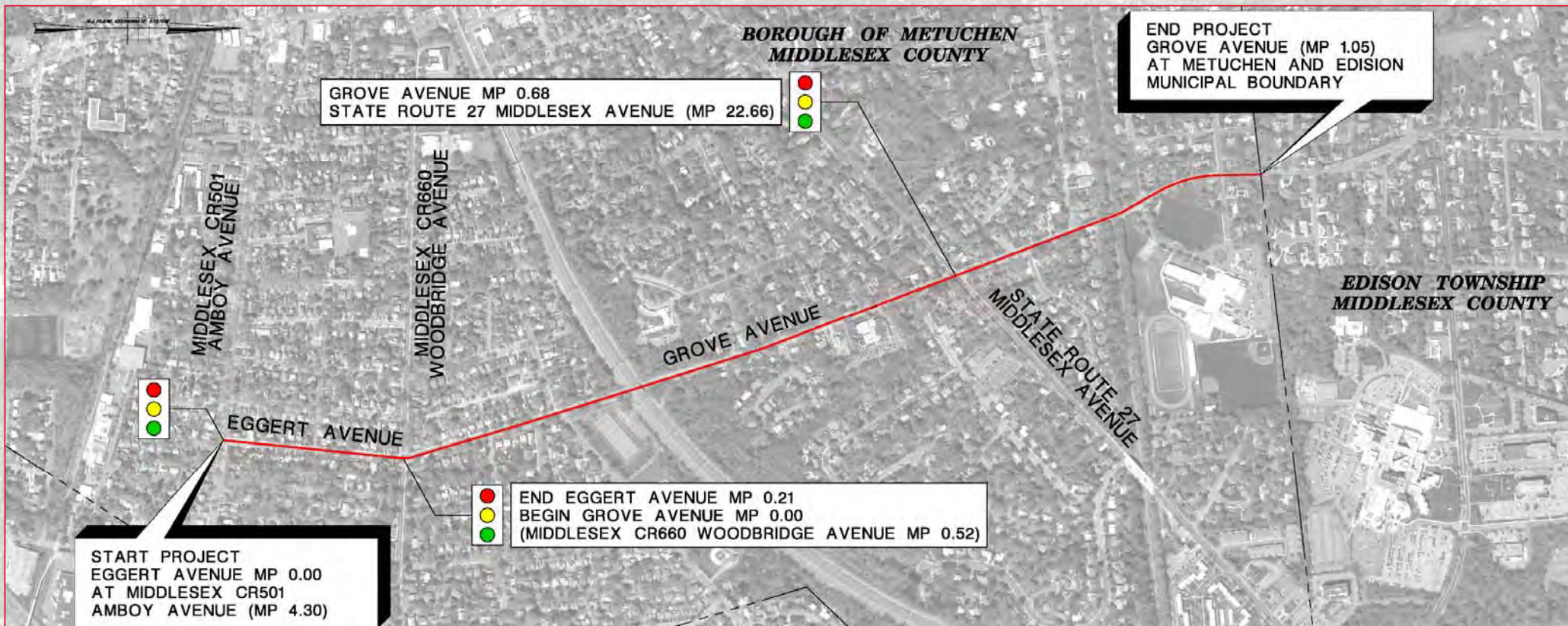
Meeting Agenda

- Panelist Introductions
- Brief Presentation at 6:05PM and 7:05PM
- Question and Answer periods (following presentations)
 - Please use the Chat Box or Question Box in the webinar
- Post Meeting Comments and Questions:
 - Send to Jay Muldoon by October 20, 2021
 - P: 732-632-8119
 - E: jmuldoon@metuchen.com

Project Purpose & Background

- The purpose of this project is to install bicycle facility enhancements such as signed and striped bicycle lanes or shared lane markings along Grove Avenue and Eggert Avenue within the Borough of Metuchen.
- The project Design and Construction cost are funded by federal funds administered through NJDOT Local Aid Transportation Alternatives (TA) Program.

Project Location / Limits



Existing Conditions

Eggert Avenue

28'± curb-to-curb width



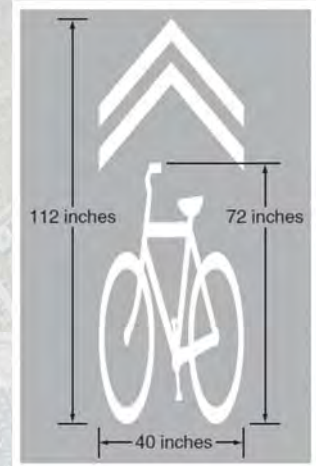
Grove Avenue

36'± and variable curb-to-curb width

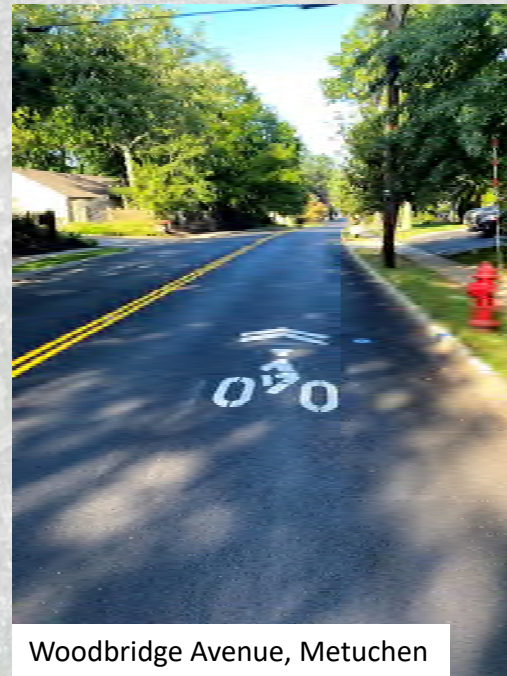
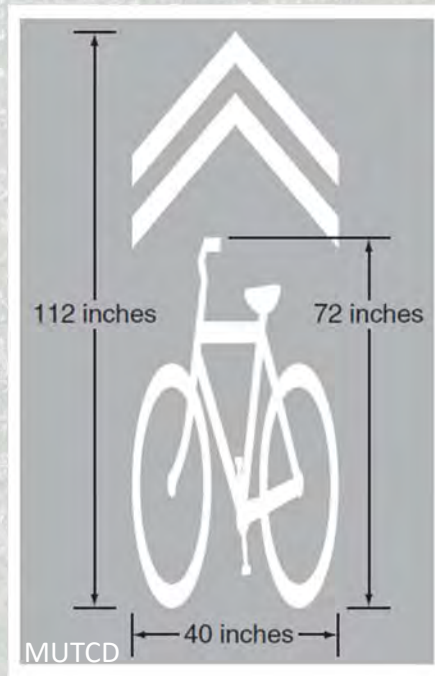


Proposed Improvements

- Eggert Avenue
 - Shared Lane Markings within travel lanes to be installed along each side of the roadway
- Grove Avenue
 - Signed and striped dedicated bicycle lanes (including color pavement treatment) along each side of the roadway
 - Shared Lane Markings to be installed in the vicinity of dedicated turn lanes along the roadway, or anywhere bicycle lanes cannot be installed within the existing curb to curb width

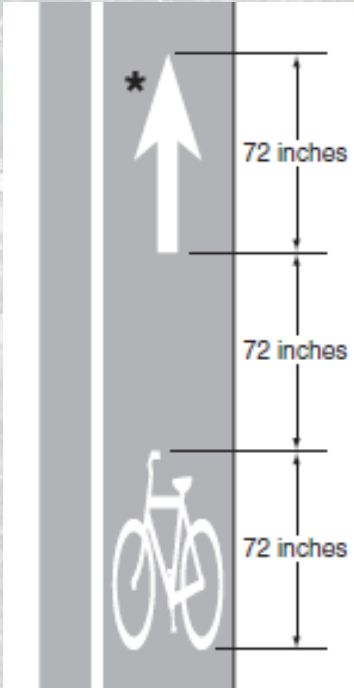


Typical Design Treatments Shared Lane Markings



Woodbridge Avenue, Metuchen

Typical Design Treatments Bicycle Lanes



Typical Design Treatments Bicycle Safe Drainage Grate





- GENERAL NOTES:**
- SOURCE OF MAPPING:**
 - AMERICAN CORP. SURVEY
 - SELECT NEARMAP AERIAL IMAGERY (2021)
 - NJ OFFICE OF INFORMATION TECHNOLOGY (NJGIT) OFFICE OF GEOGRAPHIC INFORMATION SYSTEMS (OGIS) (2019)
 - SOURCE OF TAX PARCEL INFORMATION:**
 - NJGIT WEBSITE (BOUNDARIES APPROXIMATE)
 - BOROUGH OF METUCHEN TAX MAPS
 - SOURCE OF UTILITY INFORMATION:**
 - UTILITY VERIFICATION PROCESSES

SIGN LEGEND:

	WB-1 30' x 30'		BB-17 24' x 30'
	WB-1P 30' x 24'		BB-18 30' x 30'
			BB-19 30' x 30'

**VIRTUAL PUBLIC INFORMATION CENTER
FOR DISCUSSION PURPOSES ONLY
OCTOBER 6, 2021**

BOROUGH OF METUCHEN

CONSTRUCTION PLANS

BOROUGH OF METUCHEN
TRANSPORTATION ALTERNATIVES DESIGN ASSISTANCE
TA 2018 - BOROUGH OF METUCHEN GROVE AVENUE
AND EGGERT AVENUE BICYCLE LANES

DATE: _____
 AUTHORITY OF AUTHORIZATION: NO. _____

REVISION	BY	DATE

5
17

AERIAL PHOTOS AND COLORS SHOWN ON THE PLANS ARE FOR CLARITY PURPOSES ONLY AND WILL NOT BE SHOWN ON THE FORMAL P.E. SUBMISSION.



- GENERAL NOTES:**
- SOURCE OF MAPPING:**
 - AMERIGUM CORP. SURVEY
 - SELECT NEARMAP AERIAL IMAGERY (2021)
 - NJ OFFICE OF INFORMATION TECHNOLOGY (NJGIT) OFFICE OF GEOGRAPHIC INFORMATION SYSTEMS (OGIS) (2015)
 - SOURCE OF TAX PARCEL INFORMATION:**
 - NJGIS WEBSITE (BOUNDARIES APPROXIMATE)
 - BOROUGH OF METUCHEN TAX MAPS
 - SOURCE OF UTILITY INFORMATION:**
 - UTILITY VERIFICATION PROCESSES

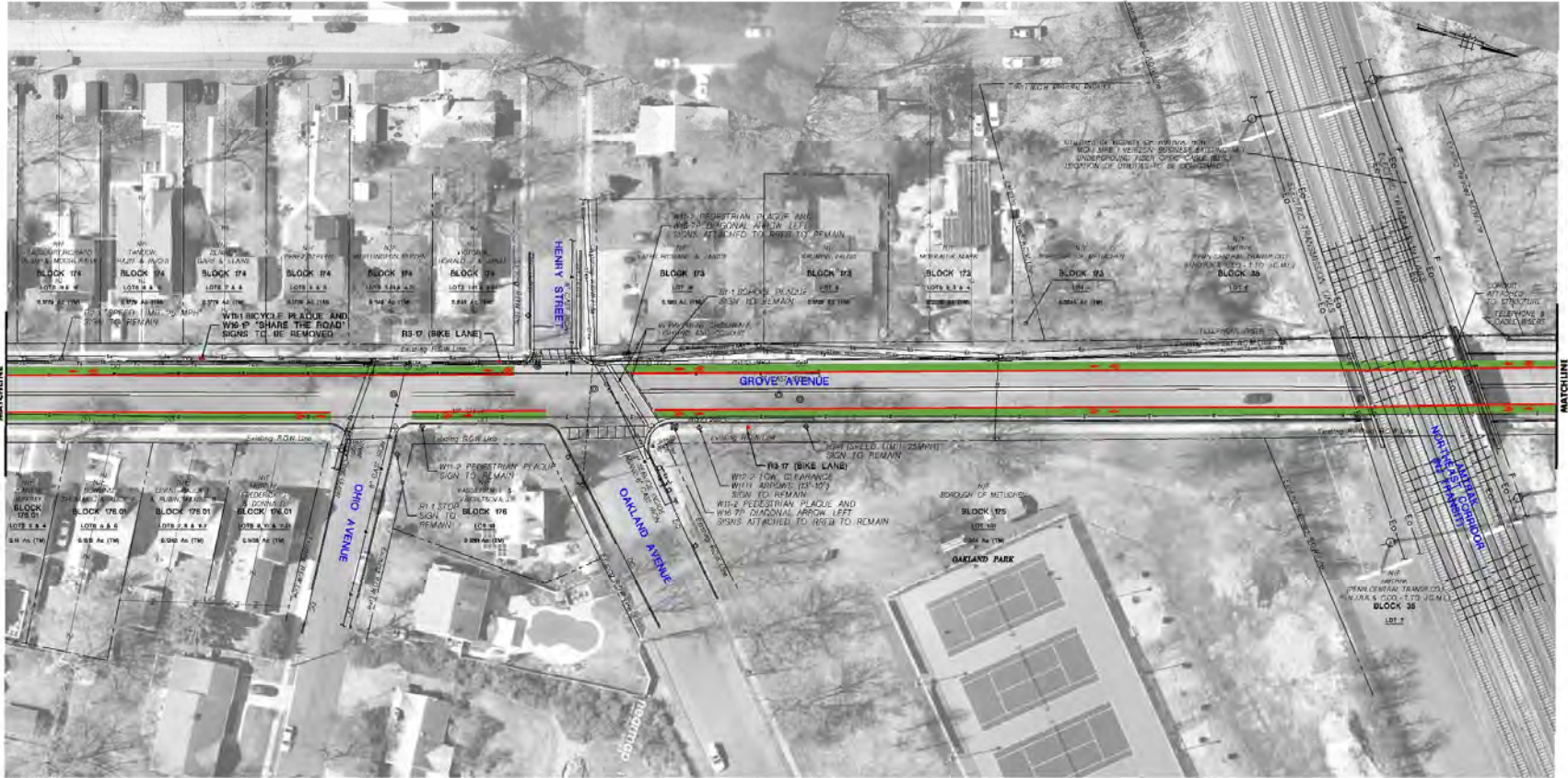
SIGN LEGEND:

	W/B 30' x 30'		W/B 24' x 30'
	W/B 8' x 24'		10.50' x 30'
			10.50' x 30'

**VIRTUAL PUBLIC INFORMATION CENTER
FOR DISCUSSION PURPOSES ONLY
OCTOBER 6, 2021**

BOROUGH OF METUCHEN	
CONSTRUCTION PLANS	
BOROUGH OF METUCHEN TRANSPORTATION ALTERNATIVES DESIGN ASSISTANCE TA 2018 - BOROUGH OF METUCHEN GROVE AVENUE AND EGBERT AVENUE BICYCLE LANES	
DATE:	
DESIGNED BY:	
CHECKED BY:	
APPROVED BY:	
DATE:	

AERIAL PHOTOS AND COLORS SHOWN ON THE PLANS ARE FOR CLARITY PURPOSES ONLY AND WILL NOT BE SHOWN ON THE FORMAL P.E. SUBMISSION.



- GENERAL NOTES:**
- SOURCE OF MAPPING:
 - AMERICAN CORP. SURVEY
 - SELECT NEARMAP AERIAL IMAGERY (2021)
 - N.J. OFFICE OF INFORMATION TECHNOLOGY (NJGIT) OFFICE OF GEOGRAPHIC INFORMATION SYSTEMS (OGIS) (2019)
 - SOURCES OF TAX PARCEL INFORMATION:
 - NJGIS WEBSITE (BOUNDARIES APPROXIMATE)
 - BOROUGH OF METUCHEN TAX MAPS
 - SOURCE OF UTILITY INFORMATION:
 - UTILITY VERIFICATION PROCESSES

SIGN LEGEND:



VIRTUAL PUBLIC INFORMATION CENTER FOR DISCUSSION PURPOSES ONLY OCTOBER 6, 2021

BOROUGH OF METUCHEN

CONSTRUCTION PLANS

BOROUGH OF METUCHEN TRANSPORTATION ALTERNATIVES DFS-GN ASSISTANCE TA 2018 - BOROUGH OF METUCHEN GROVE AVENUE AND EGERT AVENUE BI-CYCLE LANES

DATE: _____

DESIGNED BY: _____

DRAWN BY: _____

CHECKED BY: _____

DATE: _____





7/17

AERIAL PHOTOS AND COLORS SHOWN ON THE PLANS ARE FOR CLARITY PURPOSES ONLY AND WILL NOT BE SHOWN ON THE FORMAL PS SUBMISSION.



- GENERAL NOTES:**
- SOURCE OF MAPPING:
 - AMERICAN CONCRETE SURVEY
 - SELECT NEARMAP AERIAL IMAGERY (2021)
 - NJ OFFICE OF INFORMATION TECHNOLOGY (NJGIT) OFFICE OF GEOGRAPHIC INFORMATION SYSTEMS (OGIS) (2019)
 - SOURCES OF TAX PARCEL INFORMATION:
 - NJGIT WEBSITE (BOUNDARIES APPROXIMATE)
 - BOROUGH OF METUCHEN TAX MAPS
 - SOURCE OF UTILITY INFORMATION:
 - UTILITY VERIFICATION PROCESSES

SIGN LEGEND:

	W-12 30" x 30"		BB-17 24" x 30"
	W-12 30" x 24"		BB-56P 30" x 36"
			BB-56P 30" x 36"

**VIRTUAL PUBLIC INFORMATION CENTER
FOR DISCUSSION PURPOSES ONLY
OCTOBER 6, 2021**

AERIAL PHOTOS AND COLORS SHOWN ON THE PLANS ARE FOR CLARITY PURPOSES ONLY AND WILL NOT BE SHOWN ON THE FORMAL P.E. SUBMISSION.

BOROUGH OF METUCHEN

CONSTRUCTION PLANS

BOROUGH OF METUCHEN
TRANSPORTATION ALTERNATIVES DESIGN ASSISTANCE
TA 2018 - BOROUGH OF METUCHEN GROVE AVENUE
AND EGGERT AVENUE BI-CYCLE LANES

DATE: _____
DRAWN BY: _____
CHECKED BY: _____
DATE: _____

8
17



- GENERAL NOTES:**
- SOURCE OF MAPPING:
 - AMERICAN CONCRETE SURVEY
 - SELECT NEARMAP AERIAL IMAGERY (2021)
 - NJ OFFICE OF INFORMATION TECHNOLOGY (NJGIT) OFFICE OF GEOGRAPHIC INFORMATION SYSTEMS (OGIS) (2019)
 - SOURCES OF TAX PARCEL INFORMATION:
 - NJGIS WEBSITE (BOUNDARIES APPROXIMATE)
 - BOROUGH OF METUCHEN TAX MAPS
 - SOURCE OF UTILITY INFORMATION:
 - UTILITY VERIFICATION PROCEDES

SIGN LEGEND:



**VIRTUAL PUBLIC INFORMATION CENTER
FOR DISCUSSION PURPOSES ONLY
OCTOBER 6, 2021**

AERIAL PHOTOS AND COLORS SHOWN ON THE PLANS ARE FOR CLARITY PURPOSES ONLY AND WILL NOT BE SHOWN ON THE FORMAL P.E. SUBMISSION.

BOROUGH OF METUCHEN

CONSTRUCTION PLANS

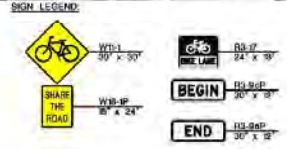
BOROUGH OF METUCHEN
TRANSPORTATION ALTERNATIVES DESIGN ASSISTANCE
TA 2018 - BOROUGH OF METUCHEN GROVE AVENUE
AND EGGERT AVENUE BICYCLE LANES

DATE: _____
DESIGNED BY: _____
CHECKED BY: _____

9
17



- GENERAL NOTES:**
- SOURCE OF MAPPING:
 - AMERICAN CORP. SURVEY
 - SELECT NEARMAP AERIAL IMAGERY (2021)
 - NJ OFFICE OF INFORMATION TECHNOLOGY (NJGIT) OFFICE OF GEOGRAPHIC INFORMATION SYSTEMS (OGIS) (2015)
 - SOURCES OF TAX PARCEL INFORMATION:
 - NJGIT WEBSITE (BOUNDARIES APPROXIMATE)
 - BOROUGH OF METUCHEN TAX MAPS
 - SOURCE OF UTILITY INFORMATION:
 - UTILITY VERIFICATION PROCESSES



AERIAL PHOTOS AND COLORS SHOWN ON THE PLANS ARE FOR CLARITY PURPOSES ONLY AND WILL NOT BE SHOWN ON THE FORMAL PS SUBMISSION.

VIRTUAL PUBLIC INFORMATION CENTER FOR DISCUSSION PURPOSES ONLY
OCTOBER 6, 2021

BOROUGH OF METUCHEN

CONSTRUCTION PLANS

BOROUGH OF METUCHEN
 TRANSPORTATION ALTERNATIVES DESIGN ASSISTANCE
 TA 2018 - BOROUGH OF METUCHEN GROVE AVENUE
 AND EGERT AVENUE BICYCLE LANES

DATE: _____
 DESIGNER: _____
 CHECKED: _____
 APPROVED: _____

10
17



- GENERAL NOTES:**
- SOURCE OF MAPPING:**
 - AMERIGUM CORP. SURVEY
 - SELECT NEARMAP AERIAL IMAGERY (2021)
 - NJ OFFICE OF INFORMATION TECHNOLOGY (NJGIT) OFFICE OF GEOGRAPHIC INFORMATION SYSTEMS (OGIS) (2015)
 - SOURCE OF TAX PARCEL INFORMATION:**
 - NJGIT WEBSITE (BOUNDARIES APPROXIMATE)
 - BOROUGH OF METUCHEN TAX MAPS
 - SOURCE OF UTILITY INFORMATION:**
 - UTILITY VERIFICATION PROCESSES

SIGN LEGEND:



VIRTUAL PUBLIC INFORMATION CENTER FOR DISCUSSION PURPOSES ONLY OCTOBER 6, 2021

BOROUGH OF METUCHEN	
CONSTRUCTION PLANS	
BOROUGH OF METUCHEN TRANSPORTATION ALTERNATIVES DESIGN ASSISTANCE TA 2015 - BOROUGH OF METUCHEN GROVE AVENUE AND EGGERT AVENUE BICYCLE LANES	
DATE:	
DESIGNER:	
DATE:	
REVISION:	BY: DATE

AERIAL PHOTOS AND COLORS SHOWN ON THE PLANS ARE FOR CLARITY PURPOSES ONLY AND WILL NOT BE SHOWN ON THE FORMAL P.E. SUBMISSION.

12/17

12/17

Environmental Services

- Categorical Exclusion Document (CED) – Prepared by NJDOT
 - Addresses any potential environmental issues: Deforestation; Cultural Resources; ecology, threatened and endangered species; Wetlands; Air & Noise; Hazardous; Public Reaction; Socioeconomics; and Environmental Permits
- Due to this project's proposed improvements involving pavement striping and signage, environmental impacts are not anticipated.

Next Steps

- Project Next Steps:
 - Review Comments from this Public Information Center
 - Complete PE Plans, Categorical Exclusion Document (CED) [Environmental]
 - Finalize Preliminary Engineering Phase
- Anticipated Project Schedule:
 - Preliminary Engineering Phase Completion: Early 2022
 - Final Design Phase Completion: Spring 2022
 - Anticipated Construction Start 2022

Questions & Open Discussion

**Please use the chat box
to ask questions or provide comments**

**To submit questions & comments after the meeting, please
contact **Jay Muldoon** by **October 20, 2021**
(Meeting summary will be posted on Borough's Website)**



Jay Muldoon

Metuchen Borough • Director of Special Projects

500 Main Street,
Metuchen, NJ 08840

P: 732-632-8119

E: jmuldoon@metuchen.com

Thank you!