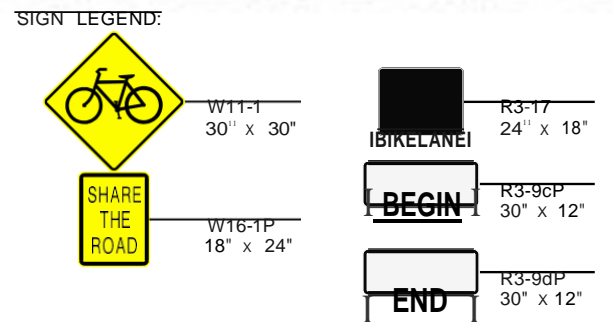




- GENERAL NOTES:**
- SOURCE OF MAPPING:
AMERCOM CORP. SURVEY
SELECT NEARMAP AERIAL IMAGERY (2021)
NJ OFFICE OF INFORMATION TECHNOLOGY (NJGIT), OFFICE
GEOGRAPHIC INFORMATION SYSTEMS (OGIS) (2015)
 - SOURCE OF TAX PARCEL INFORMATION:
NJGIN WEBSITE (BOUNDARIES APPROXIMATE)
BOROUGH OF METUCHEN TAX MAPS
 - SOURCE OF UTILITY INFORMATION:
UTILITY VERIFICATION PROCESS



**VIRTUAL PUBLIC INFORMATION CENTER
FOR DISCUSSION PURPOSES ONLY
OCTOBER 6, 2021**

BOROUGH OF METUCHEN

CONSTRUCTION PLANS

BOROUGH OF METUCHEN
TRANSPORTATION ALTERNATIVES DESIGN ASSISTANCE
TA 201B-BOROUGH OF METUCHEN GROVE AVENUE
AND EGGERT AVENUE BICYCLE LANES

NVS, INC.
CERTIFICATION OF AUTHORIZATION NO. 24GA27930500

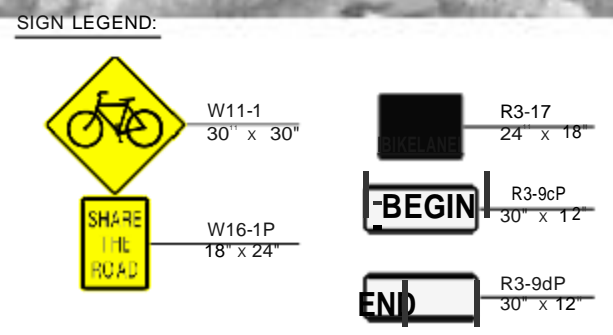
5
17

FILE: \\hd02-nvs.com\dev\Project\28621-0001783_00 - Metuchen Tap - Drive Area\Drawings\TA 201B\Construction\C-01.dwg

AERIAL PHOTOS AND COLORS SHOWN ON THE PLANS ARE FOR CLARITY PURPOSES ONLY AND WILL NOT BE SHOWN ON THE FORMAL RE-SUBMISSION.



- GENERAL NOTES:
- SOURCE OF MAPPING:
 - AMERCOM CORP. SURVEY
 - SELECT NEARMAP AERIAL IMAGERY (2021)
 - NJ OFFICE OF INFORMATION TECHNOLOGY (NJOIT), OFFICE OF GEOGRAPHIC INFORMATION SYSTEMS (OGIS) (2015)
 - SOURCE OF BASE PARCEL INFORMATION:
 - NJONLINE WEBSITE PARCEL INFORMATION
 - SOURCE OF UTILITY INFORMATION:
 - BOROUGH OF METUCHEN TAX MAPS
 - UTILITY VERIFICATION PROCESS



VIRTUAL PUBLIC INFORMATION CENTER FOR DISCUSSION PURPOSES ONLY
OCTOBER 6, 2021

BOROUGH OF METUCHEN

CONSTRUCTION PLANS

BOROUGH OF METUCHEN
 TRANSPORTATION ALTERNATIVES DESIGN ASSISTANCE
 TA 201B-BOROUGH OF METUCHEN GROVE AVENUE
 AND EGGERT AVENUE BICYCLE LANES

NVS, INC.
 CERTIFICATION OF AUTHORIZATION NO. 24GA27930600

AERIAL PHOTOS AND COLORS SHOWN ON THE PLANS ARE FOR CLARITY PURPOSES ONLY AND WILL NOT BE SHOWN ON THE FORMAL PE SUBMISSION.

REVISION	BY	CKD	DATE



GENERAL NOTES:

- SOURCE OF MAPPING:
 - AMERCOM CORP. SURVEY
 - SELECT NEARMAP AERIAL IMAGERY (2021)
 - NJ OFFICE OF INFORMATION TECHNOLOGY (NJOIT), OFFICE OF GEOGRAPHIC INFORMATION SYSTEMS (OGIS) (2015)
- SOURCE OF TAX PARCEL INFORMATION:
 - NJGIN WEBSITE (BOUNDARIES APPROXIMATE)
 - BOROUGH OF METUCHEN TAX MAPS
- SOURCE OF UTILITY INFORMATION:
 - UTILITY VERIFICATION PROCESS

SIGN LEGEND:

	W11-1 30" x 30"		R3-17 24" x 18"
	W16-1P 18" x 24"		R3-9cP 30" x 12"
			R3-9dP 30" x 12"

**VIRTUAL PUBLIC INFORMATION CENTER
FOR DISCUSSION PURPOSES ONLY
OCTOBER 6, 2021**

BOROUGH OF METUCHEN	
CONSTRUCTION PLANS	
BOROUGH OF METUCHEN TRANSPORTATION ALTERNATIVES DESIGN ASSISTANCE TA 201B-BOROUGH OF METUCHEN GROVE AVENUE AND EGGERT AVENUE BICYCLE LANES	
<small>NVS, INC.</small> CERTIFICATION OF AUTHORIZATION NO. 24GA27930600	
REVISION	BY CK'D DATE






AERIAL PHOTOS AND COLORS SHOWN ON THE PLANS ARE FOR CLARITY PURPOSES ONLY AND WILL NOT BE SHOWN ON THE FORMAL PE SUBMISSION.



GENERAL NOTES:

- SOURCE OF MAPPING:
 - AMERCOM CORP. SURVEY
 - SELECT NEARMAP AERIAL IMAGERY (2021)
 - NJ OFFICE OF INFORMATION TECHNOLOGY (NJOIT), OFFICE OF GEOGRAPHIC INFORMATION SYSTEMS (OGIS) (2015)
- SOURCE OF TAX PARCEL INFORMATION:
 - NJGIN WEBSITE (BOUNDARIES APPROXIMATE)
 - BOROUGH OF METUCHEN TAX MAPS
- SOURCE OF UTILITY INFORMATION:
 - UTILITY VERIFICATION PROCESS

SIGN LEGEND:

	W11-1 30" X 30"		R3-17 24" X 18"
	W16-1P 18" X 24"		R3-9cP 30" X 12"
			R3-9dP 30" X 12"

**VIRTUAL PUBLIC INFORMATION CENTER
FOR DISCUSSION PURPOSES ONLY
OCTOBER 6, 2021**

BOROUGH OF METUCHEN			
CONSTRUCTION PLANS			
BOROUGH OF METUCHEN TRANSPORTATION ALTERNATIVES DESIGN ASSISTANCE TA 201B-BOROUGH OF METUCHEN GROVE AVENUE AND EGGERT AVENUE BICYCLE LANES			
<small>NVS, INC.</small> <small>CERTIFICATION OF AUTHORIZATION NO. 24GA27930500</small>			
REVISION	BY	CKD	DATE

AERIAL PHOTOS AND COLORS SHOWN ON THE PLANS ARE FOR CLARITY PURPOSES ONLY AND WILL NOT BE SHOWN ON THE FORMAL PE SUBMISSION.



GENERAL NOTES:

- SOURCE OF MAPPING:
 - AMERCOM CORP. SURVEY
 - SELECT NEARMAP AERIAL IMAGERY (2021)
 - NJ OFFICE OF INFORMATION TECHNOLOGY (NJGIT), OFFICE OF GEOGRAPHIC INFORMATION SYSTEMS (OGIS) (2015)
- SOURCE OF TAX PARCEL INFORMATION:
 - NJGIN WEBSITE (BOUNDARIES APPROXIMATE)
 - BOROUGH OF METUCHEN TAX MAPS
- SOURCE OF UTILITY INFORMATION:
 - UTILITY VERIFICATION PROCESS

SIGN LEGEND:

	W11-1 30" X 30"		R3-17 24" X 18"
	W16-1P 18" X 24"		R3-9cP 30" X 12"
			R3-9dP 30" X 12"

**VIRTUAL PUBLIC INFORMATION CENTER
FOR DISCUSSION PURPOSES ONLY
OCTOBER 6, 2021**

BOROUGH OF METUCHEN

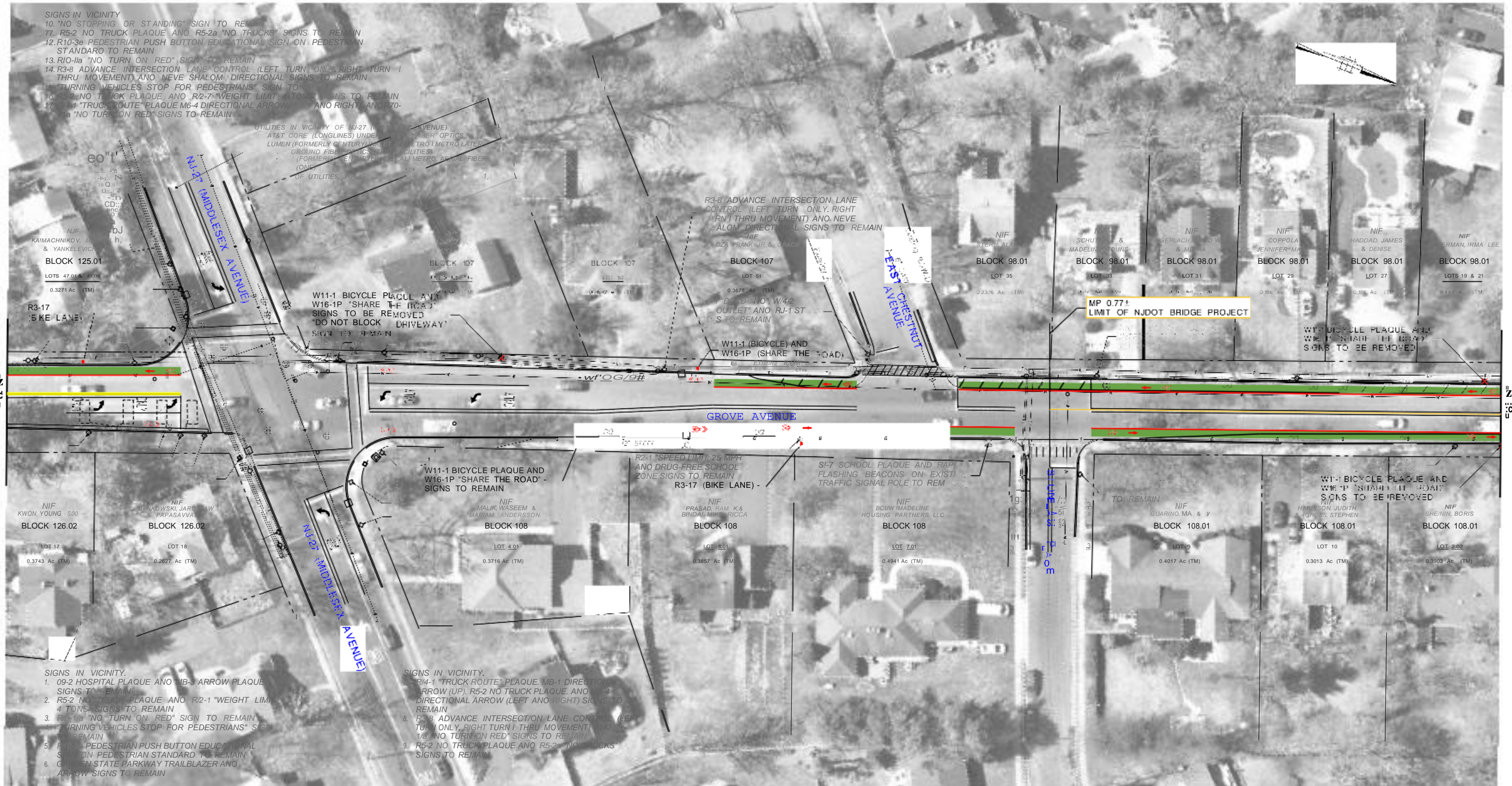
CONSTRUCTION PLANS

BOROUGH OF METUCHEN
TRANSPORTATION ALTERNATIVES DESIGN ASSISTANCE
TA 201B -BOROUGH OF METUCHEN GROVE AVENUE
AND EGGERT AVENUE BICYCLE LANES

NVS, INC.
CERTIFICATION OF AUTHORIZATION NO. 24GA27930500

REVISION	BY	CK'D	DATE

AERIAL PHOTOS AND COLORS SHOWN ON THE PLANS ARE FOR CLARITY PURPOSES ONLY AND WILL NOT BE SHOWN ON THE FORMAL PE SUBMISSION.



SIGNS IN VICINITY
10. NO STOPPING OR STANDING SIGN TO REMAIN
11. R5-2 NO TRUCK PLAQUE AND R5-2a NO TRUCKS SIGNS TO REMAIN
12. R10-3a PEDESTRIAN PUSH BUTTON EDUCATIONAL SIGN ON PEDESTRIAN STANDARD TO REMAIN
13. R10-1a NO TURN ON RED SIGN TO REMAIN
14. R3-8 ADVANCE INTERSECTION LANE CONTROL (LEFT TURN ONLY, RIGHT TURN I THRU MOVEMENT) AND NEVE SHALOM DIRECTIONAL SIGNS TO REMAIN
15. TURNING VEHICLES STOP FOR PEDESTRIANS SIGN TO REMAIN
16. R5-2 NO TRUCK PLAQUE AND R2-7 WEIGHT LIMIT 4 TONS SIGNS TO REMAIN
17. R4-1 TRUCK ROUTE PLAQUE M6-4 DIRECTIONAL ARROW (UP) AND RIGHT AND R70-1a NO TURN ON RED SIGNS TO REMAIN

UTILITIES IN VICINITY OF NJ-27 (MIDDLESEX AVENUE)
AT&T CORE (LONG LINES) UNDER FIBER OPTICS
LUMEN (FORMERLY CENTURYLINK) METRO / METRO LATER
GROUND FIBER OPTICS FACILITIES
(FORMERLY CENTURYLINK) METRO AERIAL FIBER
(FORMERLY CENTURYLINK) METRO AERIAL FIBER
(FORMERLY CENTURYLINK) METRO AERIAL FIBER

NIF KAIMACHNIKOV, I. & YANKELEVICH, I. h.
BLOCK 125.01
LOTS 47.01 & 47.02
0.3271 Ac. (TM)

NIF BLOCK 107
LOT 51
0.3678 Ac. (TM)

NIF BLOCK 107
LOT 51
0.3678 Ac. (TM)

NIF BLOCK 98.01
LOT 35
0.2376 Ac. (TM)

NIF BLOCK 98.01
LOT 31
0.2376 Ac. (TM)

NIF BLOCK 98.01
LOT 29
0.2376 Ac. (TM)

NIF BLOCK 98.01
LOTS 19 & 21
0.2376 Ac. (TM)

R3-17 BIKE LANE
W16-1P SHARE THE ROAD

W11-1 BICYCLE PLAQUE AND W16-1P SHARE THE ROAD SIGNS TO BE REMOVED
DO NOT BLOCK DRIVEWAY SIGN TO REMAIN

W11-1 (BICYCLE) AND W16-1P (SHARE THE ROAD) SIGNS TO REMAIN

MP 0.771
LIMIT OF NJDOT BRIDGE PROJECT

W11-1 BICYCLE PLAQUE AND W16-1P SHARE THE ROAD SIGNS TO BE REMOVED

NIF BLOCK 126.02
LOT 17
0.3743 Ac. (TM)

NIF BLOCK 126.02
LOT 18
0.2627 Ac. (TM)

NIF BLOCK 108
LOT 4.01
0.3716 Ac. (TM)

NIF BLOCK 108
LOT 6.01
0.3857 Ac. (TM)

NIF BLOCK 108
LOT 7.01
0.4941 Ac. (TM)

NIF BLOCK 108.01
LOT 9
0.4017 Ac. (TM)

NIF BLOCK 108.01
LOT 10
0.3013 Ac. (TM)

NIF BLOCK 108.01
LOT 2.02
0.3903 Ac. (TM)

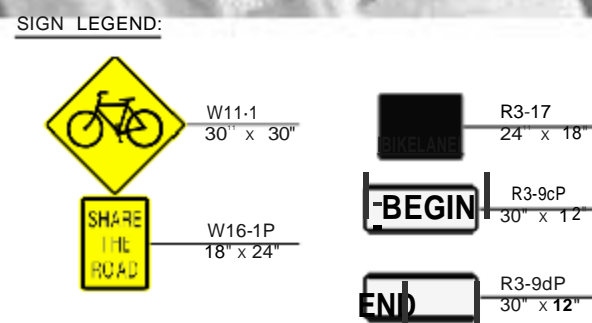
SIGNS IN VICINITY.
1. 09-2 HOSPITAL PLAQUE AND M8-3 ARROW PLAQUE SIGNS TO REMAIN
2. R5-2 NO TRUCK PLAQUE AND R2-1 WEIGHT LIMIT 4 TONS SIGNS TO REMAIN
3. R10-1a NO TURN ON RED SIGN TO REMAIN
4. TURNING VEHICLES STOP FOR PEDESTRIANS SIGN TO REMAIN
5. PEDESTRIAN PUSH BUTTON EDUCATIONAL SIGN ON PEDESTRIAN STANDARD TO REMAIN
6. GREEN STATE PARKWAY TRAILBLAZER AND ARROW SIGNS TO REMAIN

SIGNS IN VICINITY.
1. R4-1 TRUCK ROUTE PLAQUE, M8-1 DIRECTIONAL ARROW (UP), R5-2 NO TRUCK PLAQUE, AND M6-4 DIRECTIONAL ARROW (LEFT AND RIGHT) SIGNS TO REMAIN
2. R3-8 ADVANCE INTERSECTION LANE CONTROL (LEFT TURN ONLY, RIGHT TURN I THRU MOVEMENT) AND R10-1a NO TURN ON RED SIGNS TO REMAIN
3. R5-2 NO TRUCK PLAQUE AND R5-2a NO TRUCKS SIGNS TO REMAIN

SI-7 SCHOOL PLAQUE AND RAPID FLASHING BEACONS ON EXISTING TRAFFIC SIGNAL POLE TO REMAIN

W11-1 BICYCLE PLAQUE AND W16-1P SHARE THE ROAD SIGNS TO BE REMOVED

- GENERAL NOTES:
1. SOURCE OF MAPPING:
- AMERCOM CORP. SURVEY
- SELECT NEARMAP AERIAL IMAGERY (2021)
- NJ OFFICE OF INFORMATION TECHNOLOGY (NJOIT), OFFICE OF GEOGRAPHIC INFORMATION SYSTEMS (OGIS) (2015)
2. SOURCE OF TAX MAP INFORMATION:
- BOROUGH OF METUCHEN TAX MAPS
3. SOURCE OF UTILITY INFORMATION:
- UTILITY VERIFICATION PROCESS



VIRTUAL PUBLIC INFORMATION CENTER FOR DISCUSSION PURPOSES ONLY
OCTOBER 6, 2021

BOROUGH OF METUCHEN
CONSTRUCTION PLANS
BOROUGH OF METUCHEN
TRANSPORTATION ALTERNATIVES DESIGN ASSISTANCE
TA 201B - BOROUGH OF METUCHEN GROVE AVENUE
AND EGGERT AVENUE BICYCLE LANES
NVS, INC.
CERTIFICATION OF AUTHORIZATION NO. 24GA27930600

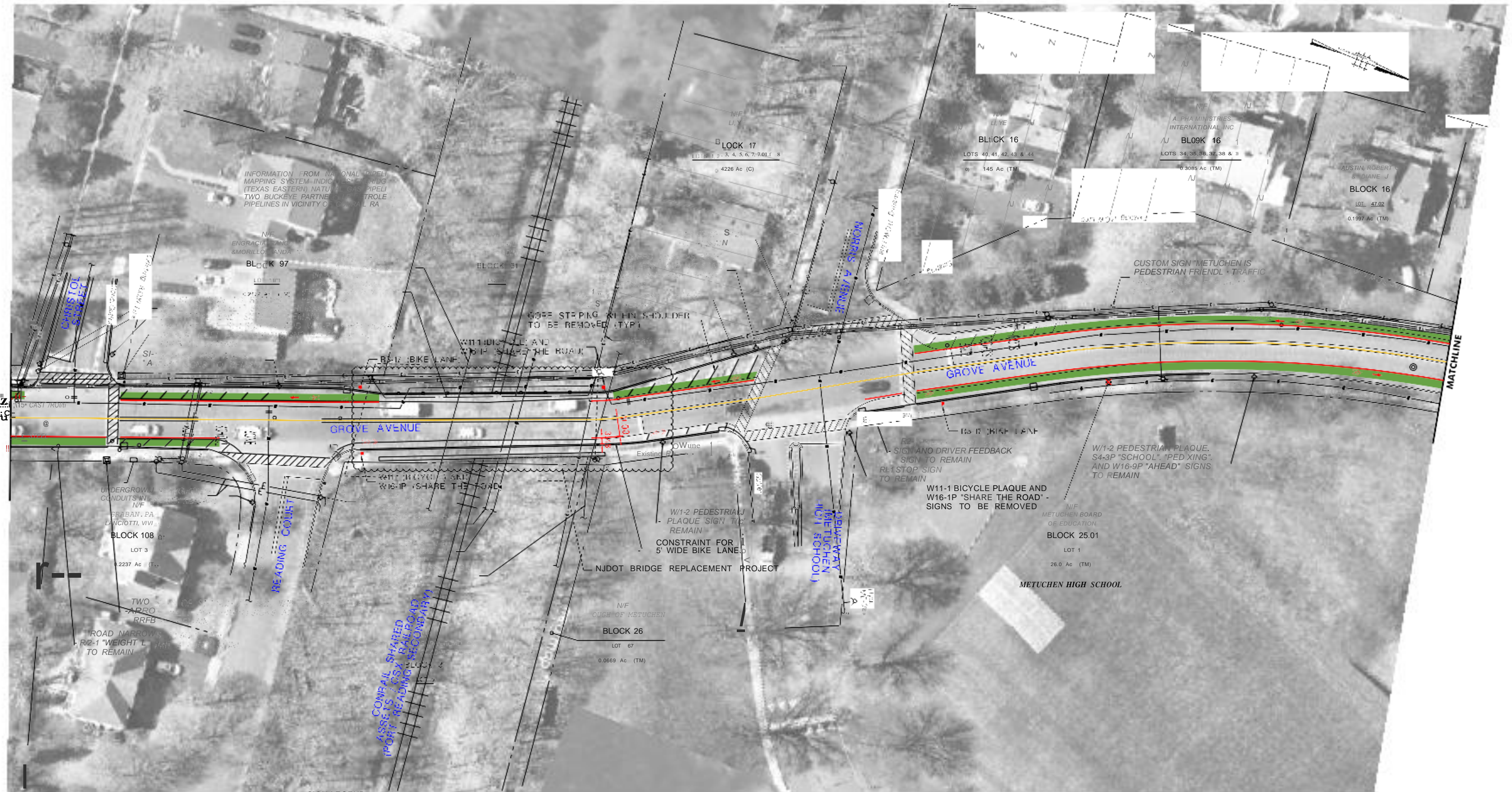
REVISION	BY	CKD	DATE

AERIAL PHOTOS AND COLORS SHOWN ON THE PLANS ARE FOR CLARITY PURPOSES ONLY AND WILL NOT BE SHOWN ON THE FORMAL PE SUBMISSION.

BOROUGH OF METUCHEN

COUNTY OF MIDDLESEX

30' 20' 10' 0 30' 60'



GENERAL NOTES:

- SOURCE OF MAPPING:
 - AMERCOM CORP. SURVEY
 - SELECT NEARMAP AERIAL IMAGERY (2021)
 - NJ OFFICE OF INFORMATION TECHNOLOGY (NJGIT), OFFICE OF GEOGRAPHIC INFORMATION SYSTEMS (OGIS) (2015)
- SOURCE OF TAX PARCEL INFORMATION:
 - NJGIN WEBSITE (BOUNDARIES APPROXIMATE)
 - BOROUGH OF METUCHEN TAX MAPS
- SOURCE OF UTILITY INFORMATION:
 - UTILITY VERIFICATION PROCESS

SIGN LEGEND:

	W11-1 30" X 30"		R3-17 24" X 18"
	W16-1P 18" X 24"		R3-9cP 30" X 12"
			R3-9dP 30" X 12"

VIRTUAL PUBLIC INFORMATION CENTER FOR DISCUSSION PURPOSES ONLY
OCTOBER 6, 2021

BOROUGH OF METUCHEN	
CONSTRUCTION PLANS	
BOROUGH OF METUCHEN TRANSPORTATION ALTERNATIVES DESIGN ASSISTANCE TA 201B-BOROUGH OF METUCHEN GROVE AVENUE AND EGGERT AVENUE BICYCLE LANES	
NVS, INC. CERTIFICATION OF AUTHORIZATION NO. 24GA27930600	
11	17

AERIAL PHOTOS AND COLORS SHOWN ON THE PLANS ARE FOR CLARITY PURPOSES ONLY AND WILL NOT BE SHOWN ON THE FORMAL PE SUBMISSION.

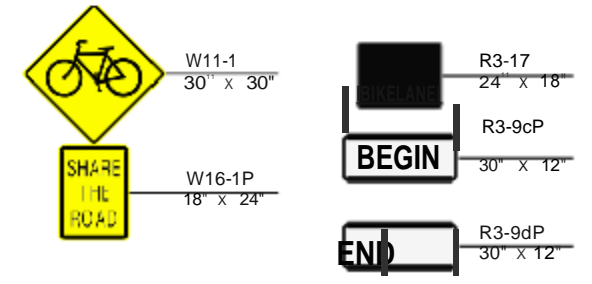
REVISION	BY	CKD	DATE



GENERAL NOTES:

- SOURCE OF MAPPING:
 - AMERCOM CORP. SURVEY
 - SELECT NEARMAP AERIAL IMAGERY (2021)
 - NJ OFFICE OF INFORMATION TECHNOLOGY (NJOIT), OFFICE OF GEOGRAPHIC INFORMATION SYSTEMS (OGIS) (2015)
- SOURCE OF TAX PARCEL INFORMATION:
 - NJGIN WEBSITE (BOUNDARIES APPROXIMATE)
 - BOROUGH OF METUCHEN TAX MAPS
- SOURCE OF UTILITY INFORMATION:
 - UTILITY VERIFICATION PROCESS

SIGN LEGEND:



**VIRTUAL PUBLIC INFORMATION CENTER
FOR DISCUSSION PURPOSES ONLY
OCTOBER 6, 2021**

BOROUGH OF METUCHEN

CONSTRUCTION PLANS

BOROUGH OF METUCHEN
TRANSPORTATION ALTERNATIVES DESIGN ASSISTANCE
TA 201B -BOROUGH OF METUCHEN GROVE AVENUE
AND EGGERT AVENUE BICYCLE LANES

NVS, INC.
CERTIFICATION OF AUTHORIZATION NO. 24GA27930500

REVISION	BY	CKD	DATE

AERIAL PHOTOS AND COLORS SHOWN ON THE PLANS ARE FOR CLARITY PURPOSES ONLY AND WILL NOT BE SHOWN ON THE FORMAL PE SUBMISSION.