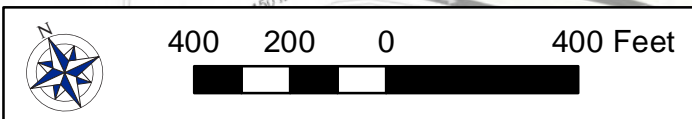






J. Fletcher Creamer  
Jack and Bore  
Work Week of 12/09/2019



**Legend** Week of 12/09/2019

-  Location of Construction Activity
-  Western Transmission Main Alignment Previously Completed
-  Western Transmission Main Alignment

 **CDM Smith**

Sources: Esri, HERE, Garmin, GeoBase, IGN, Kadaster NL, OpenStreetMap contributors, and the GIS User Community