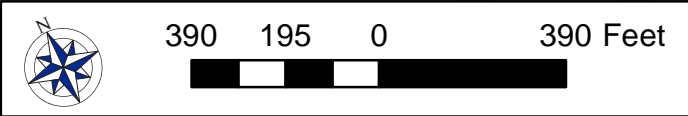







J. Fletcher Creamer 42" Main Installation
Work Week of 1/28/2019 Full Road Closure
At Lisa Lane

Hydrant Replacement At Westinghouse
Scheduled for Monday 1/28



Legend Week of 1/28/2019

-  Western Transmission Main Alignment
-  Western Transmission Main Alignment Previously Completed
-  Location of Construction Activity

Sources: Esri, HERE, Garmin, GeoBase, IGN, Kadaster NL, OpenStreetMap contributors, and the GIS User Community