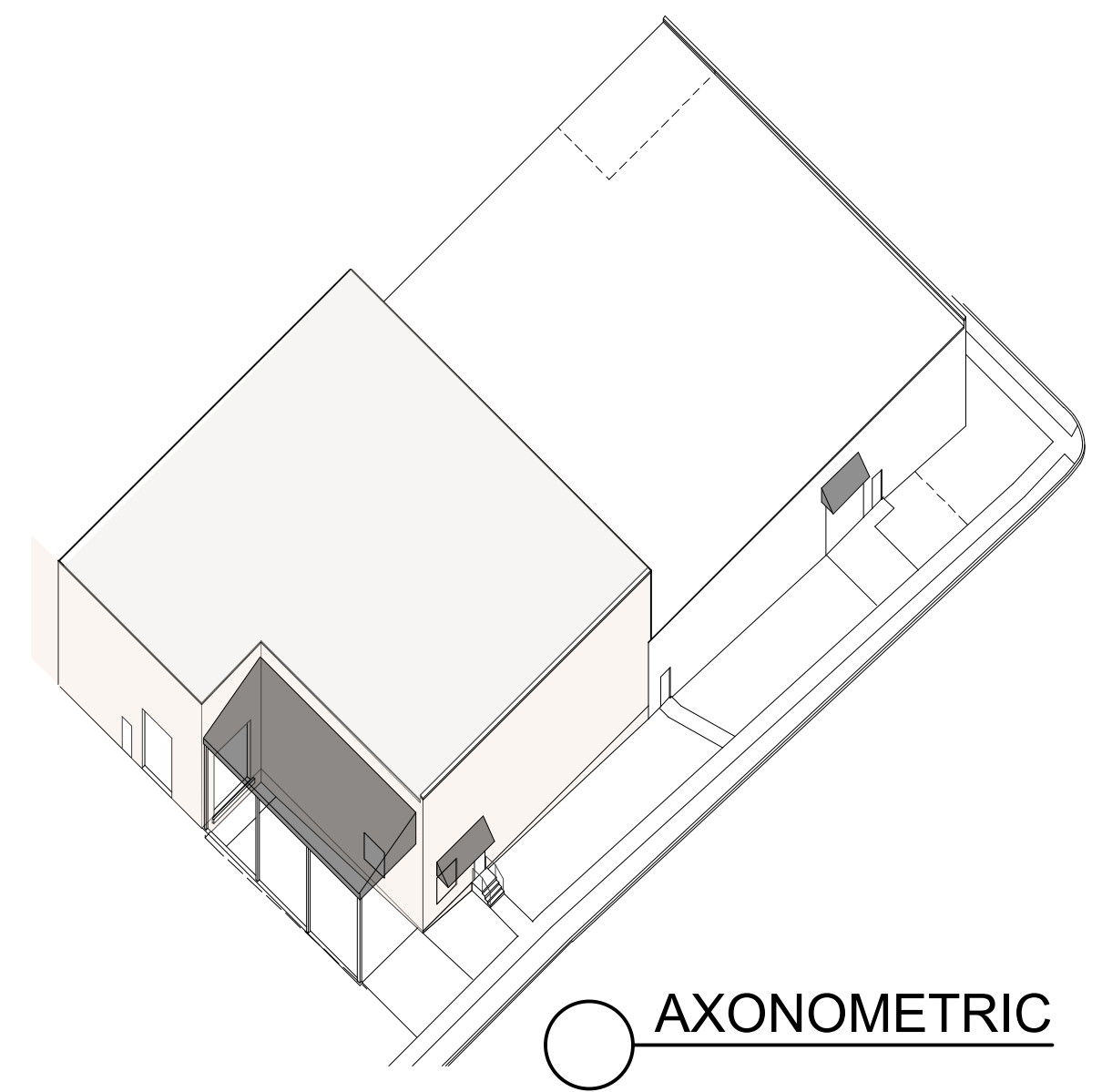
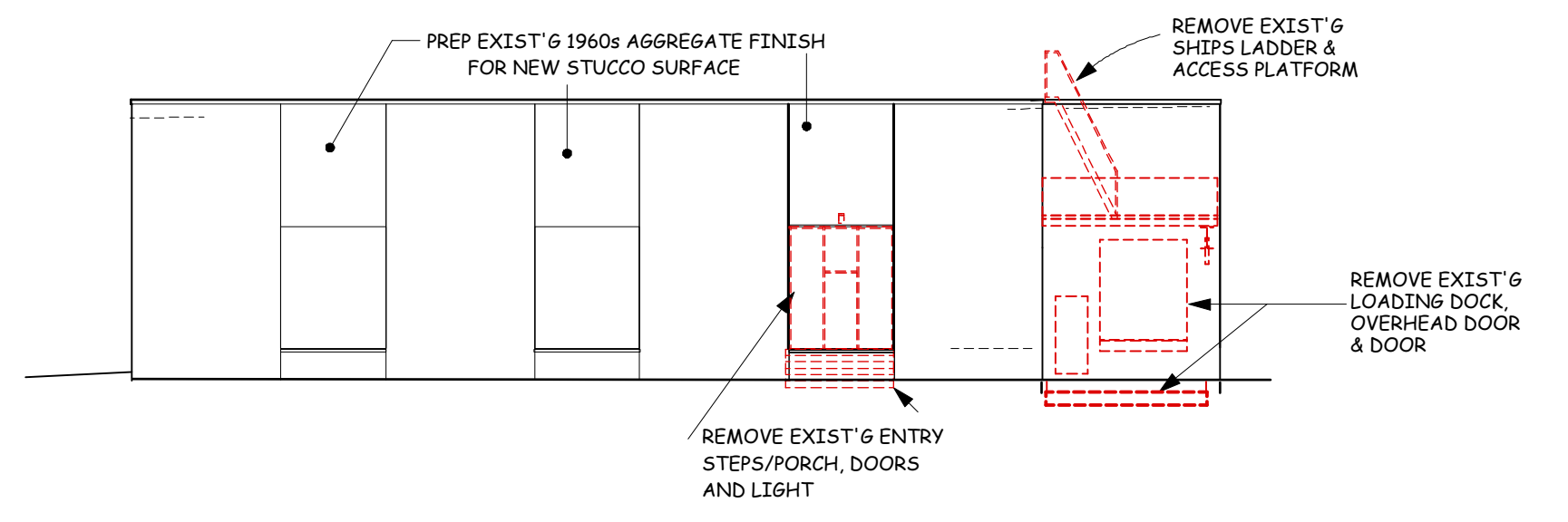


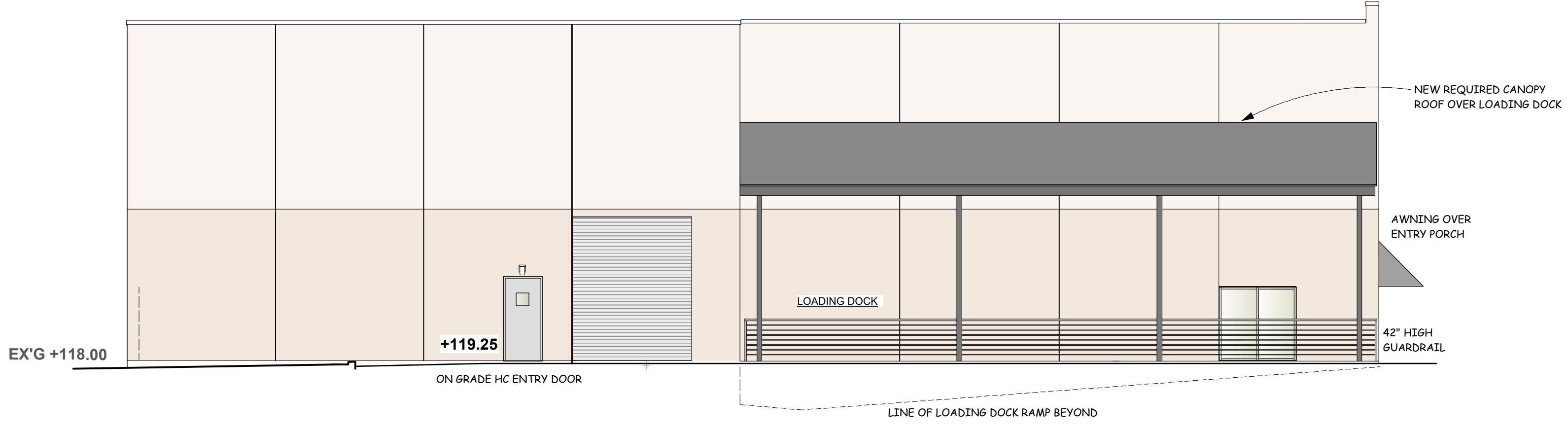
**1 NORTH - PROSPECT STREET ELEVATION**  
1/8" = 1'-0"



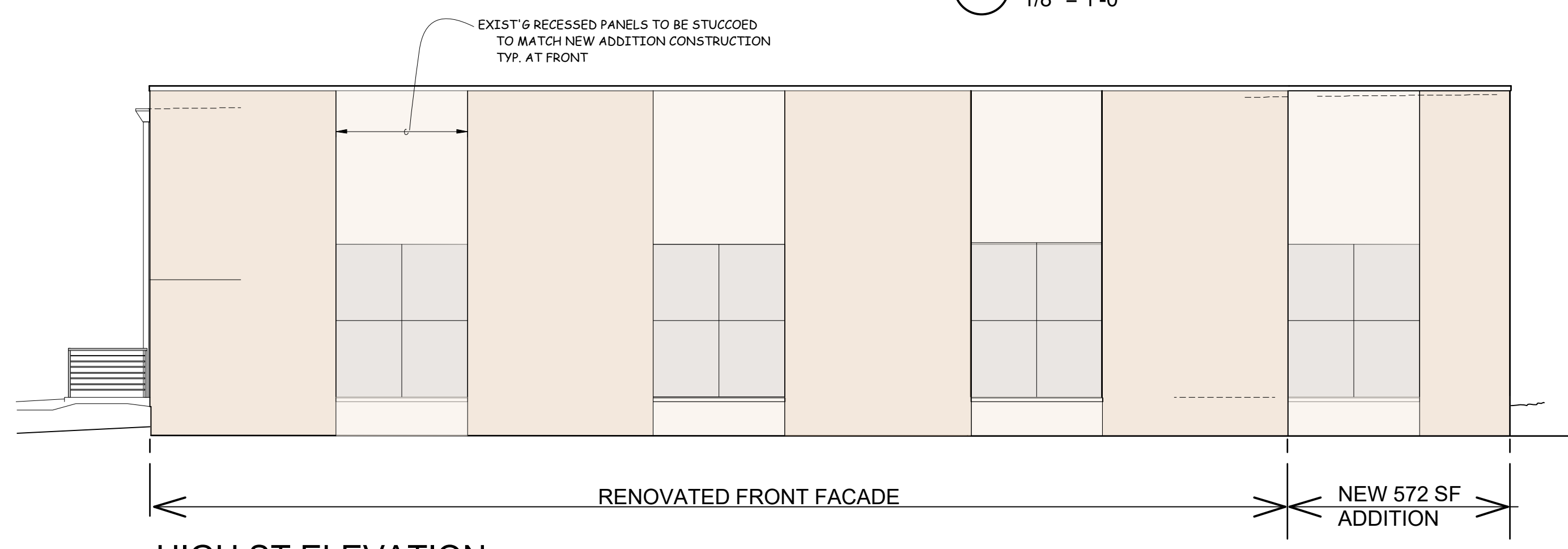
**AXONOMETRIC**



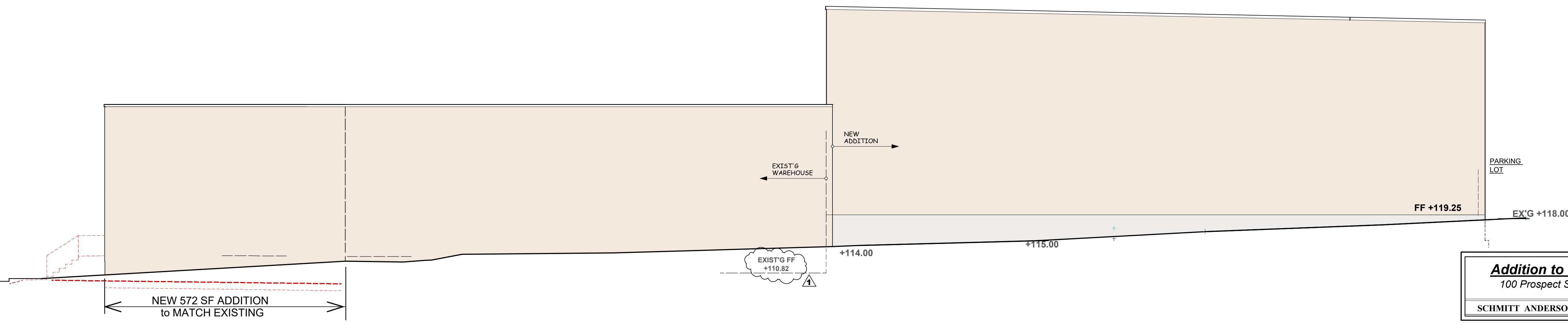
**3a SELECTIVE DEMO @ HIGH ST**  
1/8" = 1'-0"



**2 SOUTH - PARKING LOT ELEVATION**  
1/8" = 1'-0"



**3 HIGH ST ELEVATION**  
1/8" = 1'-0"



**4 WEST- REAR ELEVATION**  
1/8" = 1'-0"

EXTERIOR FINISH KEY	
<b>WALL FINISHES :</b>	
MASONRY CMU WALLS w/ MODIFIED STUCCO w/ EIFS FINISH OVER AT FRONT AND SIDES	
MASONRY CMU WALLS - PAINTED AT REAR WALL ONLY	
ROOF COPING GUTTERS & LEADERS WILL BE COATED OR ANODIZED ALUMINUM	
<b>WINDOWS &amp; DOORS :</b>	
INSULATED ALUMINUM STOREFRONT UNITS - ANODIZED TEMPERED AS REQUIRED	
<b>ROOFING :</b>	
FULLY ADHERED 45 OR 60 MIL EPDM OR TPO OVER 3" POLYISO RIGID INSULATION	
NEW FABRIC AWNINGS AT NEW & EXISTING ENTRY/ OVER EXISTING O.H. DOOR	
<b>LIGHTING :</b>	
SMALL RESIDENTIAL-SCALE WALL MOUNTED FIXTURES AT NEW ENTRIES	
LARGER WALL-MOUNTED AREA LIGHTS FOR LOADING DOCK & PARKING LOT ACCESS & SECURITY	
SEE ENGRG DOCUMENTS FOR DETAILED INFORMATION	

**Addition to Existing Warehouse**  
100 Prospect St., Metuchen, New Jersey

**A-2**  
March 25, 2022

SCHMITT ANDERSON ARCHITECTS 10 Hillside Avenue Metuchen NJ 08840

REVISID May 8, 2023  
REVISID August 2, 2022  
REVISID October 23, 2022  
REVISID March 29, 2023