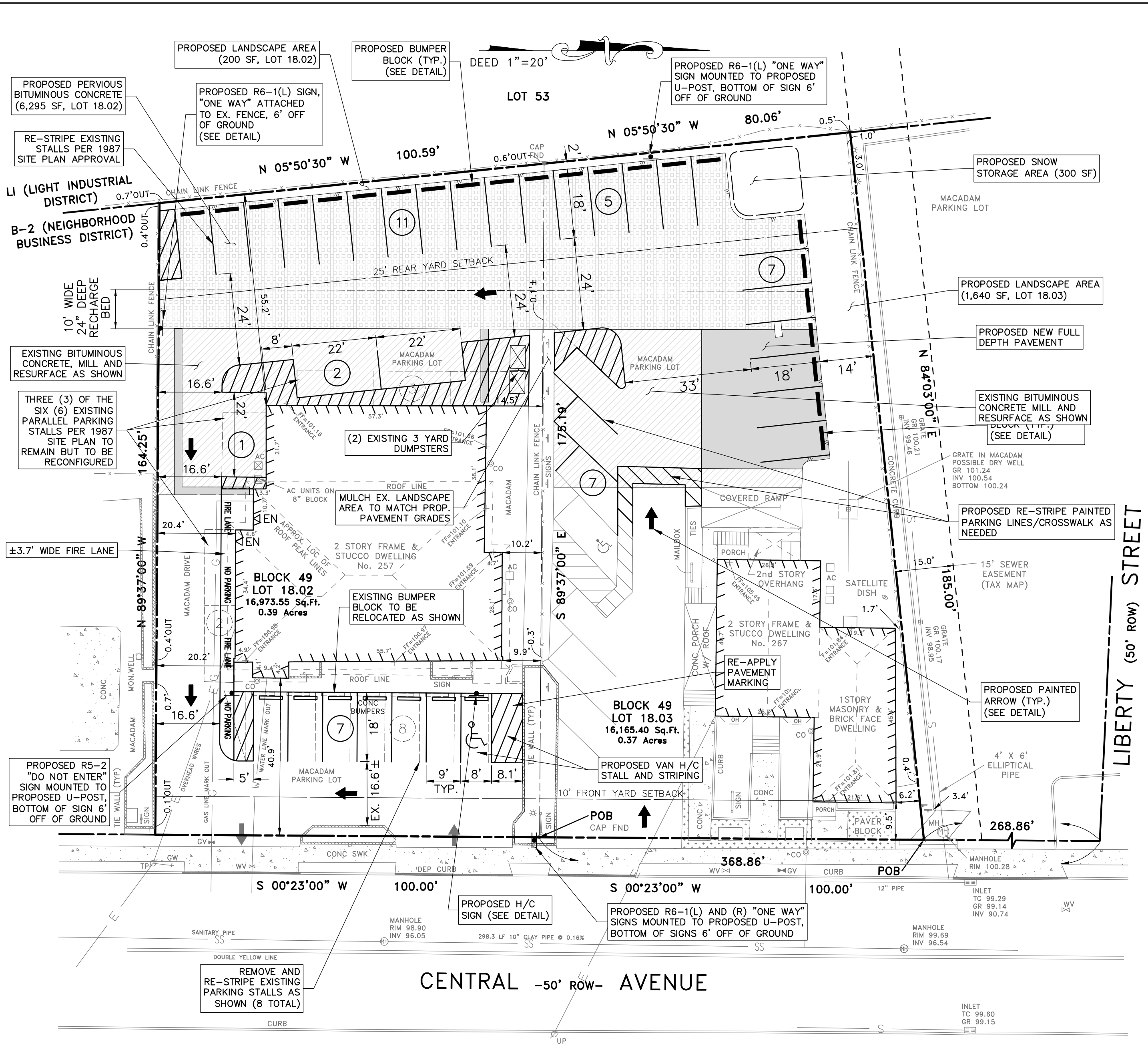
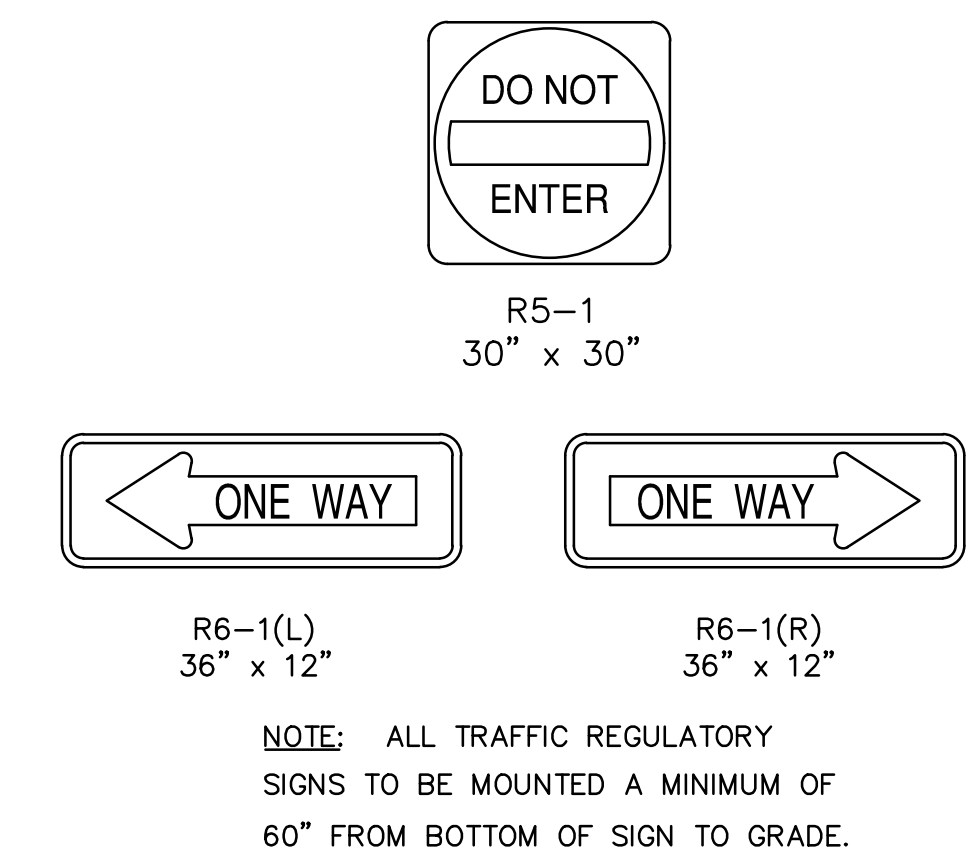
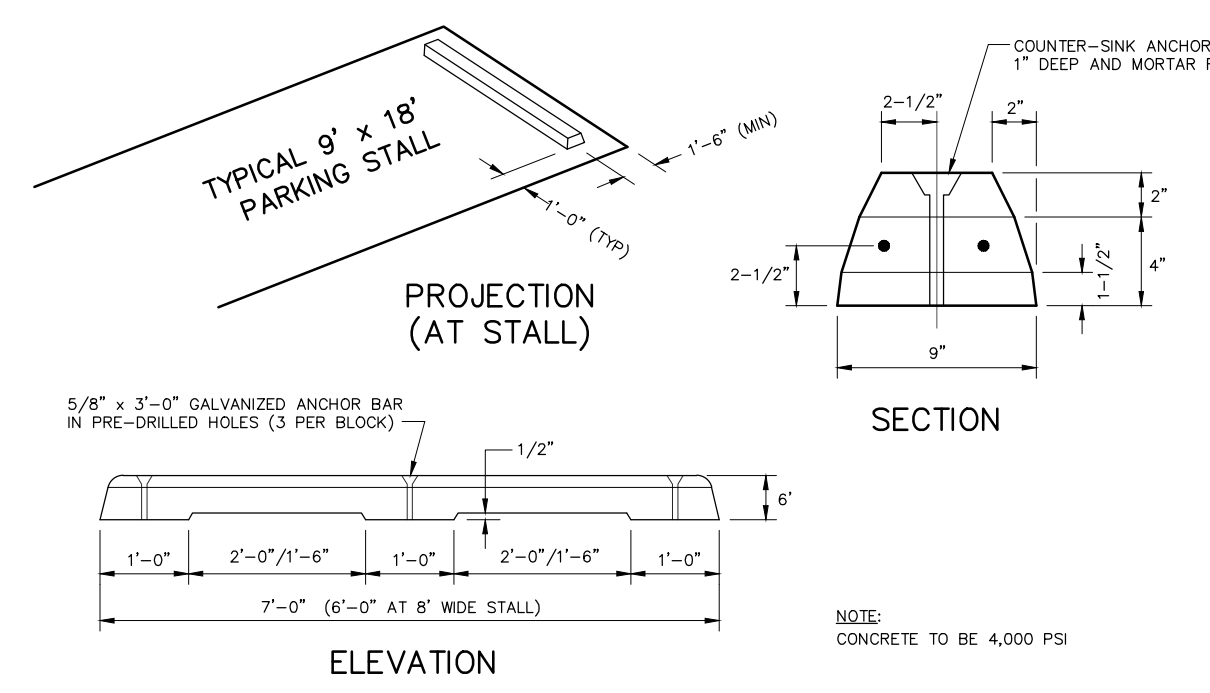
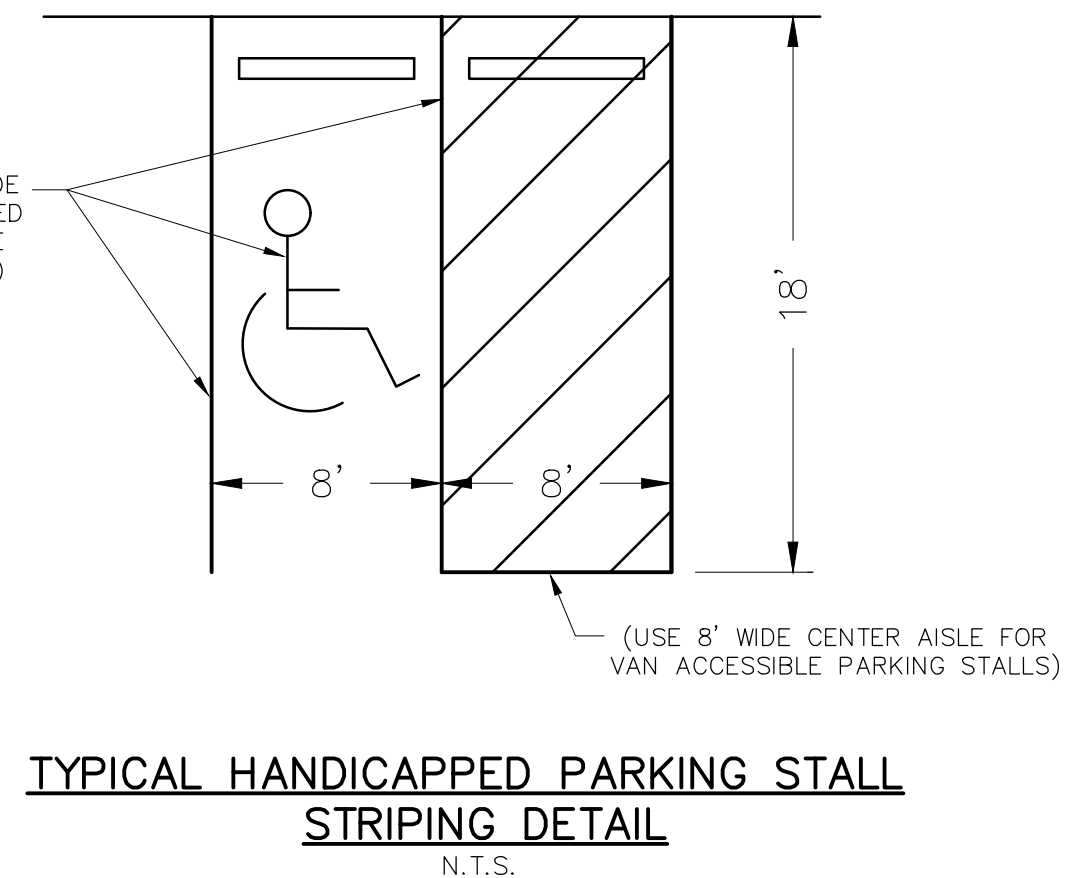
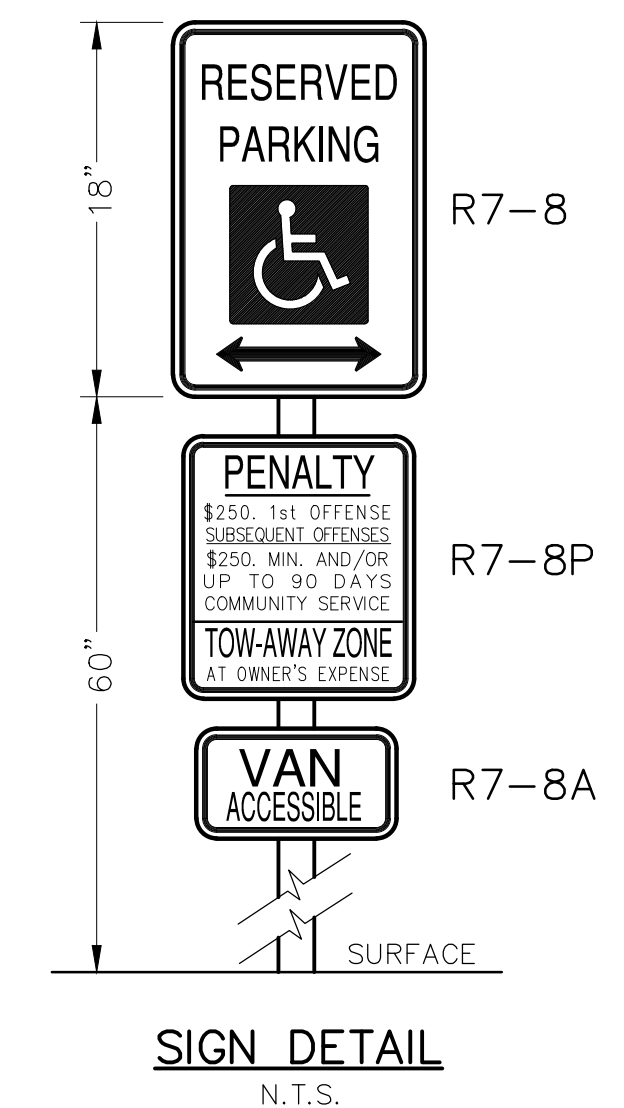


EXISTING CONDITIONS MAP



SITE PLAN



NOTE: WHITE COLOR PAINT TO BE USED FOR TRAFFIC CONTROL MARKINGS.

SCALE: 1" = 10'

NOTE: ALL TRAFFIC REGULATORY SIGNS TO BE MOUNTED A MINIMUM OF 60" FROM BOTTOM OF SIGN TO GRADE.

REFERENCES:

THE OUTBOUND SURVEY AND TOPOGRAPHIC INFORMATION SHOWN ON THESE PLANS IS BASED ON A PLAN ENTITLED, "TOPOGRAPHIC SURVEY 257 & 267 CENTRAL AVENUE BOROUGH OF METUCHEN, MIDDLESEX COUNTY, NEW JERSEY, BLOCK 49 LOTS 18.02 & 18.03", PREPARED BY BRUNSWICK SURVEYING INCORPORATED, PISCATAWAY, N.J., DATED 05/02/2019.

NOTE: ALL ELEVATIONS ARE BASED ON AN ASSUMED DATUM.

REV.	DESCRIPTION	DATE	BY
1	REVISED PARKING PER BOROUGH DRC	4/22/22	RVB

COMMENTS

EXISTING CONDITIONS MAP & SITE PLAN

GRAPHIC SCALE 1" = 20'

COPYRIGHT 2021, MERIDIAN ENGINEERING GROUP, INC. - ALL RIGHTS RESERVED. NO REPRODUCTION OR USE OF THIS DRAWING IS ALLOWED IN PART OR IN WHOLE BY ANY PROCESS WITHOUT PRIOR WRITTEN AUTHORIZATION FROM MERIDIAN ENGINEERING GROUP, INC.

MERIDIAN ENGINEERING GROUP, INC.

CERTIFICATE OF AUTHORIZATION NUMBER: 24GA28084700

CIVIL ENGINEERING • LAND SURVEYING
LAND PLANNING • LANDSCAPE ARCHITECTURE
HYDRAULIC & HYDROLOGIC ENGINEERING
ENVIRONMENTAL & EROSION CONTROL ENGINEERING

1199 AMBOY AVENUE, SUITE 1D
EDISON, NEW JERSEY 08837
PHONE: (732) 205-8288 • FAX: (732) 719-7208
www.meridianegi.com • info@meridianegi.com

PRELIMINARY & FINAL MAJOR SITE PLAN
PREPARED FOR:
**257 & 267 CENTRAL AVENUE
BLOCK 49, LOTS 18.02 & 18.03**

TAX MAP 10
SITUATED IN:
BOROUGH OF METUCHEN
MIDDLESEX COUNTY, NEW JERSEY

CAD:	46-51	DATE:	02/19/21	SCALE:	1" = 20'
FILE:	046.0051	DRAWN:	DSA	SHEET:	2 OF 4

LESLIE A. WALKER III, PE DATE
PROFESSIONAL ENGINEER
NEW JERSEY LICENSE NUMBER: 24GE04729700