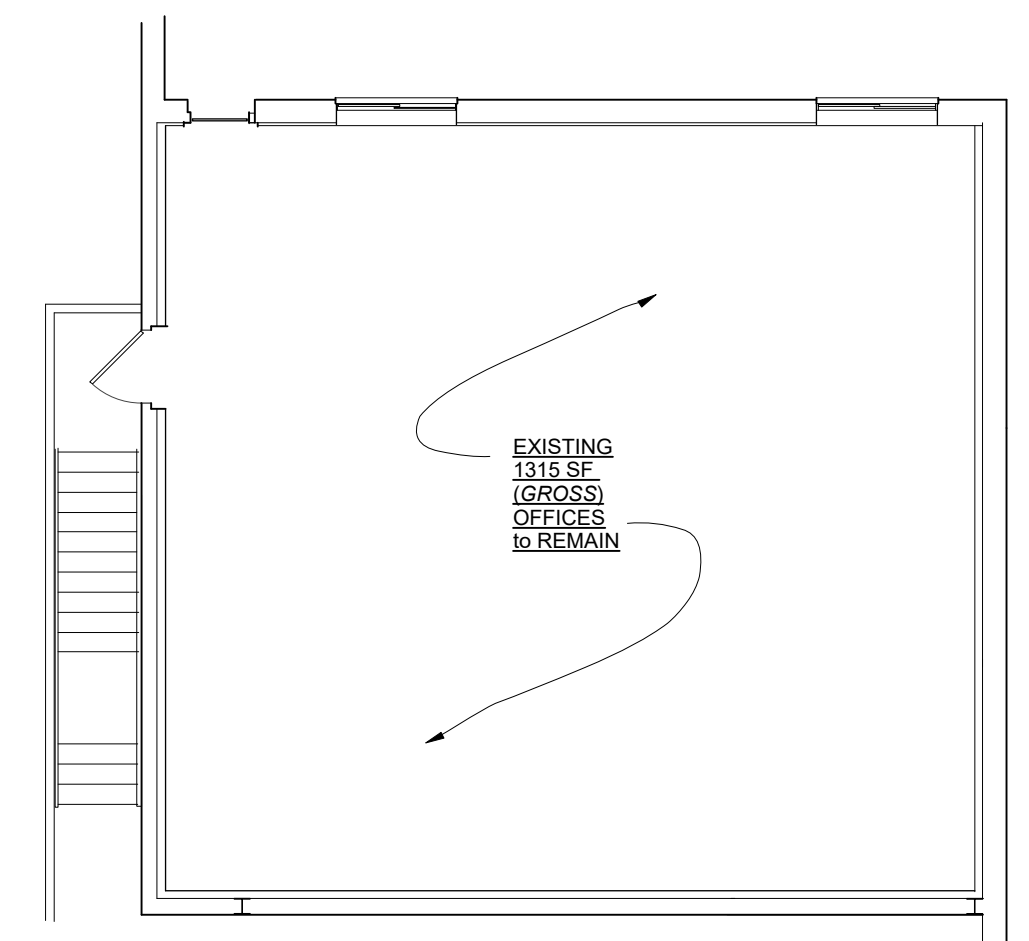


**1 FLOOR PLAN**  
1/8" = 1'-0"



**SITE**



**2 EX'G 2nd FLOOR PLAN**  
1/8" = 1'-0"

**GENERAL NOTES**

- + SEE ENGRG DOCUMENTS FOR UTILITY CONNECTIONS / MODIFICATIONS
- + NEW ADDITION FIRE AREA WILL BE FULLY FIRE SUPPRESSED / SPRINKLERED IN ACCORDANCE w/ NFPA 13 FOR "HIGH-BAY" STORAGE WAREHOUSE USE
- + SITE and BUILDING to be FULLY HANDICAP ACCESSIBLE
- + WAREHOUSES WILL NOT HOUSE ANY HAZARDOUS or VOLATILE MATERIAL
- + NO SIGNAGE PROPOSED ON PROPERTY or BUILDING
- + TRASH & RECYCLABLES COLLECTION WILL BE IN (2) 5 YARD DUMPSTERS
- + NO BASEMENT OR USABLE ATTIC PROPOSED IN ADDITION.
- + STRUCTURE IS CONCRETE SLAB ON GRADE / STEEL FRAME / CMU MASONRY EXTERIOR WALLS AND STEEL JOIST / DECK ROOF
- + NEW WINDOWS & DOORS SHALL BE CONVENTIONAL ALUMINUM STOREFRONT
- + NEW HVAC FOR OFFICE AREA ONLY DUCTLESS SPLIT UNIT w/ CONDENSOR IN CENTER OF ROOF - NOT VISIBLE FROM STREET. WAREHOUSE WILL NOT BE HEATED OR COOLED

**EXTERIOR FINISH KEY**

- WALL FINISHES :**
- MASONRY CMU WALLS w/ MODIFIED STUCCO w/ EIFS FINISH OVER AT FRONT AND SIDES
  - MASONRY CMU WALLS - PAINTED AT REAR WALL ONLY
  - ROOF COPING GUTTERS & LEADERS WILL BE COATED OR ANODIZED ALUMINUM
- WINDOWS & DOORS :**
- INSULATED ALUMINUM STOREFRONT UNITS - ANODIZED TEMPERED AS REQUIRED
- ROOFING :**
- FULLY ADHERED 45 OR 60 MIL EPDM OR TPO OVER 3" POLYISO RIGID INSULATION
  - NEW FABRIC AWNINGS AT NEW & EXISTING ENTRY/ OVER EXISTING O.H. DOOR
- LIGHTING :**
- SMALL RESIDENTIAL-SCALE WALL MOUNTED FIXTURES AT NEW ENTRIES
  - LARGER WALL-MOUNTED AREA LIGHTS FOR LOADING DOCK & PARKING LOT ACCESS & SECURITY
  - SEE ENGRG DOCUMENTS FOR DETAILED INFORMATION



**Addition to Existing Warehouse**  
100 Prospect St., Metuchen, New Jersey  
Schmitt Anderson Architects 10 Hillside Avenue Metuchen NJ 08840

**A-1**  
March 25, 2022

REVISED August 2, 2022  
REVISED October 23, 2022