

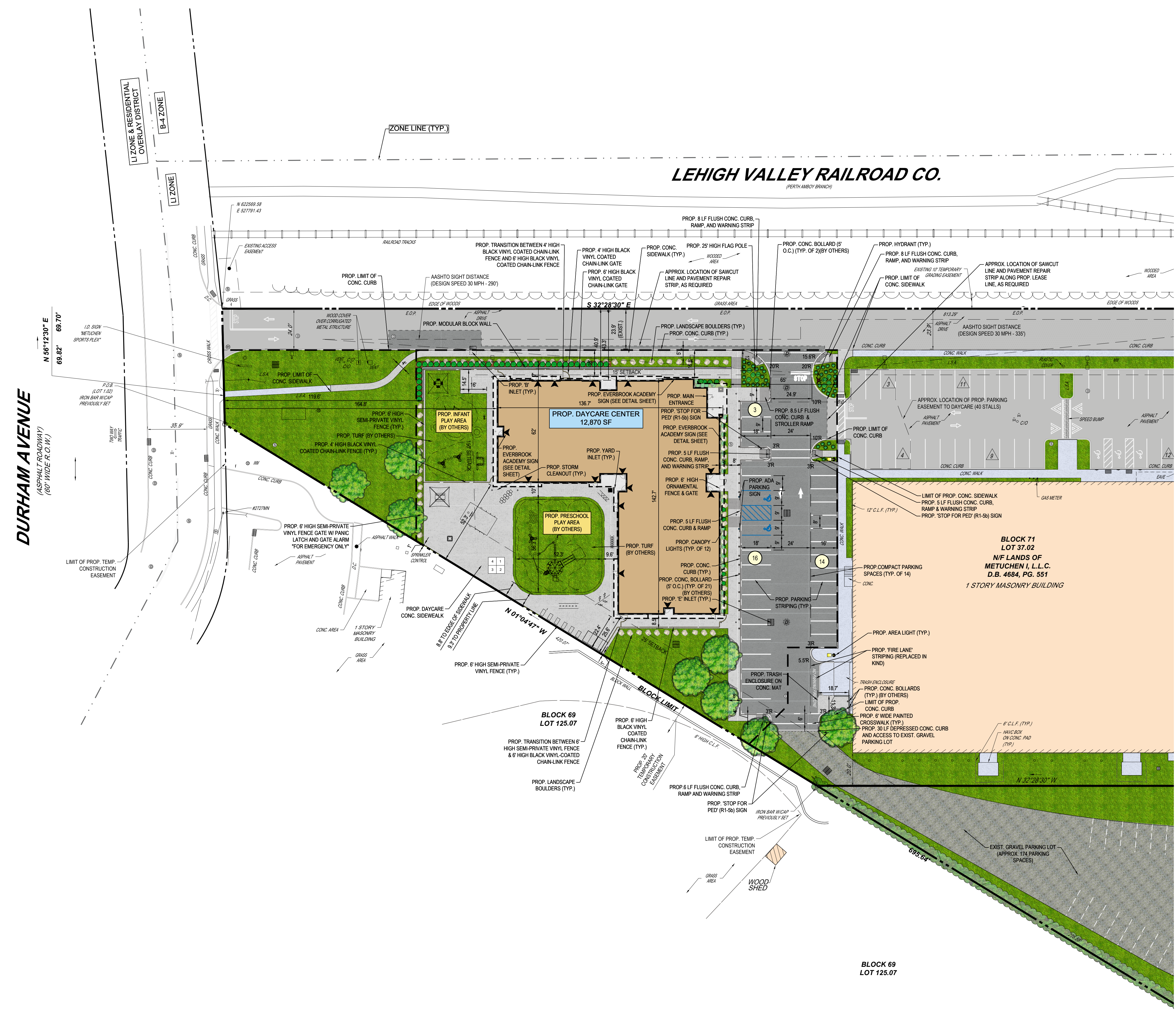


- SITE LAYOUT NOTES** (Rev. 2/2020)
- THE GENERAL NOTES MUST BE INCLUDED AS PART OF THIS ENTIRE DOCUMENT PACKAGE AND ARE PART OF THE CONTRACT DOCUMENTS. THE GENERAL NOTES ARE REFERENCED HEREIN, AND THE CONTRACTOR MUST REFER TO THEM AND FULLY COMPLY WITH THESE NOTES, IN THEIR ENTIRETY. THE CONTRACTOR MUST BE FAMILIAR WITH AND AWARE OF THE GENERAL NOTES WITH ALL OF THE GENERAL NOTES AND ALL OF THE PLANS' SPECIFIC NOTES.
  - PRIOR TO THE COMMENCEMENT OF GENERAL CONSTRUCTION, THE CONTRACTOR MUST INSTALL SOIL EROSION CONTROL AND ANY STORMWATER POLLUTION PREVENTION PLAN (SWPPP) MEASURES NECESSARY, AS INDICATED ON THE APPROVED SOIL EROSION AND SEDIMENT CONTROL PLAN AND IN ACCORDANCE WITH APPLICABLE AND/OR APPROPRIATE AGENCIES' GUIDELINES TO PREVENT SEDIMENT AND/OR LOOSE DEBRIS FROM WASHING ONTO ADJACENT PROPERTIES OR THE RIGHT OF WAY.
  - ALL DIRECTIONAL TRAFFIC SIGNING AND PAVEMENT STRIPING MUST CONFORM TO THE LATEST STANDARDS OF THE MANUAL ON UNIFORM TRAFFIC CONTROL DEVICES (MUTCD) AND ANY APPLICABLE STATE OR LOCALLY APPROVED SUPPLEMENTS, GUIDELINES, RULES, REGULATIONS, STANDARDS AND THE LIKE.
  - THE LOCATIONS OF PROPOSED UTILITY POLES AND TRAFFIC SIGNS SHOWN ON THE PLANS ARE SCHEMATIC AND PRELIMINARY. THE CONTRACTOR IS SOLELY RESPONSIBLE FOR FIELD-VERIFYING THEIR LOCATION. THE CONTRACTOR MUST COORDINATE THE LOCATION OF TRAFFIC SIGNS WITH THE ENTITY WITH JURISDICTION OVER THE PROJECT.
  - ALL DIMENSIONS SHOWN ARE TO BOTTOM FACE OF CURB, EDGE OF PAVEMENT, OR EDGE OF BUILDING, EXCEPT WHEN DIMENSIONED TO A PROPERTY LINE, STAKE OUT OF LOCATIONS OF INLETS, LIGHT POLES, ETC. MUST BE PERFORMED IN STRICT ACCORDANCE WITH THE DETAILS, UNLESS NOTED CLEARLY OTHERWISE.
  - WHEN APPLICABLE, OWNER OPERATOR MUST FILE THE NOT FOR PERMITS PERMITS AT APPROPRIATE AND/OR REQUIRED TIMEFRAMES BASED UPON THE DESIRED START OF CONSTRUCTION. LAND DISTURBING ACTIVITIES MUST NOT COMMENCE UNTIL APPROVAL TO DO SO HAS BEEN RECEIVED FROM GOVERNING AUTHORITIES, INCLUDING STORMWATER POLLUTION PREVENTION PLAN, PER N.J.A.C. 7:27. THE CONTRACTOR MUST STRICTLY ADHERE TO THE APPROVED SWPPP PLAN DURING CONSTRUCTION OPERATIONS, IF PROVIDED.
  - ALL WEATHERED CONCRETE MUST BE AIR ENTRAINED AND INCLUDE THE MINIMUM COMPRESSIVE STRENGTH OF 4000 PSI AT 28 DAYS UNLESS OTHERWISE NOTED ON THE PLANS, DETAILS AND/OR GEOTECHNICAL REPORT.
  - THE CONTRACTOR MUST REPAIR OR REPLACE, AT THE CONTRACTOR'S SOLE COST AND EXPENSE, ALL SIDEWALKS, CURBS, AND PAVEMENT DAMAGED BY CONSTRUCTION ACTIVITIES WHETHER SPECIFIED ON THIS PLAN OR NOT.



**REVISIONS**

REV	DATE	COMMENT	DRAWN BY	CHECKED BY
1	11/19/2021	REV. PER CLIENT COMMENTS	MB	MLAT
2	12/23/2021	REV. PER BOROUGH COMMENTS	MB	MLAT
3	01/05/2022	REV. PER TBD	MB	MLAT



**LEGEND**

EXISTING	PROPOSED

**811**  
Know what's below. Call before you dig.  
NEW JERSEY  
YOU MUST CALL BEFORE ANY EXCAVATION WHETHER IT'S ON PRIVATE OR PUBLIC LAND.  
1-800-472-7889  
www.nj-811.org

**FOR EXHIBIT PURPOSES ONLY**  
THIS DRAWING IS INTENDED FOR MUNICIPAL AND/OR AGENCY REVIEW AND APPROVAL. IT IS NOT INTENDED AS A CONSTRUCTION DOCUMENT. THE USER ASSUMES ALL RESPONSIBILITIES.  
PROJECT No.: JM190715  
DRAWN BY: MB  
CHECKED BY: MLAT  
DATE: 01/24/2022  
CAD I.D.: JM190715-MCR-0A

**PRELIMINARY & FINAL MAJOR SITE PLAN**  
FOR  
**MAVEN GROUP**  
PROPOSED DAYCARE  
215 DURHAM AVENUE  
BLOCK 71; LOTS 37.01 & 37.02  
BOROUGH OF METUCHEN  
MIDDLESEX COUNTY, NEW JERSEY  
OAKITE SITE  
REDEVELOPMENT;  
TAX MAP SHEET #17

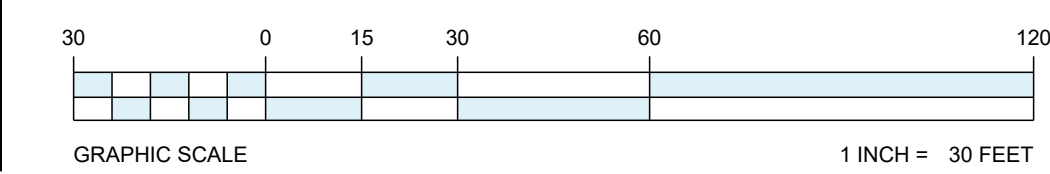
**BOHLER**  
BOHLER ENGINEERING, N.J. LLC  
10000 MIDLANTIC DRIVE, SUITE 410W  
MOUNT LAUREL, NJ 08054  
PHONE: (856) 930-4000  
FAX: (856) 930-4001  
www.BohlerEngineering.com  
LICENSED PROFESSIONAL ENGINEER, ARCHITECT, AND LAND SURVEYOR

**A. TAMOUS**  
PROFESSIONAL ENGINEER  
NEW JERSEY LICENSE NO. 46184  
PENNSYLVANIA LICENSE NO. 73909

SHEET TITLE:  
**SITE LAYOUT PLAN**  
SHEET NUMBER:  
**C-302**  
REVISION 3 - 01/05/2022

**PROPOSED IMPROVEMENTS WITHIN PLAYGROUND AREAS ARE SHOWN SCHEMATICALLY FOR REFERENCE ONLY. REFER TO ARCHITECTURAL DRAWINGS FOR CONSTRUCTION DETAILS, SPECIFICATIONS, AND OTHER INFORMATION RELATED TO THE PLAYGROUND AREAS.**

**THIS PLAN TO BE UTILIZED FOR SITE LAYOUT PURPOSES ONLY**



G:\301\JM190715\EDWARDS\CURRENT EXHIBIT\TAMOUS\BOHLER\JM190715-MCR-0A-1-LAYOUT-C-302-21E