

NEW JERSEY DEPARTMENT OF THE TREASURY
 DIVISION OF TAXATION
 PUBLIC UTILITY TAX BUREAU
 APPROVED AS A TAX MAP PURSUANT TO THE
 PROVISIONS OF CHAPTER 175, LAWS OF 1932, ETC.
 FOR THE DIVISION OF TAXATION
 BY: G. H. WERCHINSKI, JR.
 DATE: MAY 4 1970 SERIAL NO. 487

TAX ASSESSMENT MAP
 BORO OF METUCHEN
 NEW JERSEY
 1939

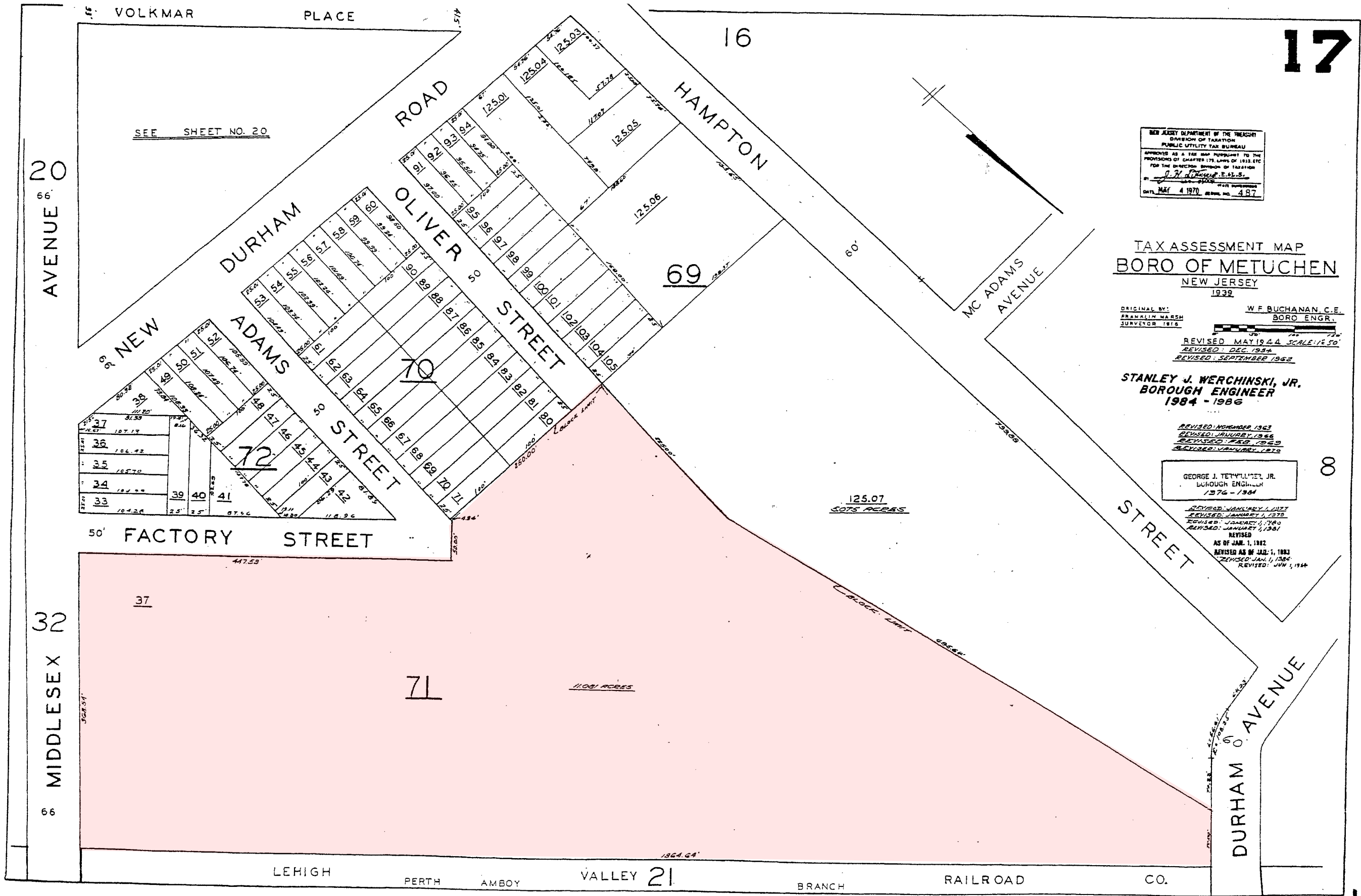
ORIGINAL BY: W.F. BUCHANAN, C.E.
 SURVEYOR 1916
 BORO ENGR.
 REVISED: MAY 1944 SCALE: 1/2" = 50'
 REVISED: DEC. 1934
 REVISED: SEPTEMBER 1962

STANLEY J. WERCHINSKI, JR.
 BOROUGH ENGINEER
 1984 - 1986

REVISED: NOVEMBER 1963
 REVISED: JANUARY 1966
 REVISED: MARCH 1969
 REVISED: JANUARY 1970

GEORGE J. TETVILLER, JR.
 BOROUGH ENGINEER
 1976 - 1984

REVISED: JANUARY 1, 1977
 REVISED: JANUARY 1, 1979
 REVISED: JANUARY 1, 1980
 REVISED: JANUARY 1, 1981
 REVISED
 AS OF JAN. 1, 1982
 REVISED AS OF JULY 1, 1983
 REVISED JAN. 1, 1984
 REVISED: JUN 1, 1984



SEE SHEET NO. 20

125.07
 5075 ACRES

11.081 ACRES

1964.64'