



REVISIONS

REV	DATE	COMMENT	DRAWN BY
1	1/26/2024	UPDATE LOT NUMBERS	SMC ATP



FOR EXHIBIT PURPOSES ONLY

THIS DRAWING IS INTENDED FOR MUNICIPAL AND/OR AGENCY REVIEW AND APPROVAL. IT IS NOT INTENDED AS A CONSTRUCTION DOCUMENT UNLESS INDICATED OTHERWISE.

PROJECT No.: JM1607152
 DRAWN BY: BH
 CHECKED BY: MJAT
 DATE: 12/15/2023
 CAD I.D.: JM1607152-SUB-E-1A

SUBDIVISION EXHIBIT

FOR
MAVEN GROUP
 experts in real estate since 1991

PROPOSED RESTAURANT WITH DRIVE THRU
 700 MIDDLESEX AVE
 BLOCK 71; LOTS 37.01 & 37.02
 BOROUGH OF METUCHEN
 MIDDLESEX COUNTY, NEW JERSEY
 OAKITE SITE
 REDEVELOPMENT;
 TAX MAP SHEET #17

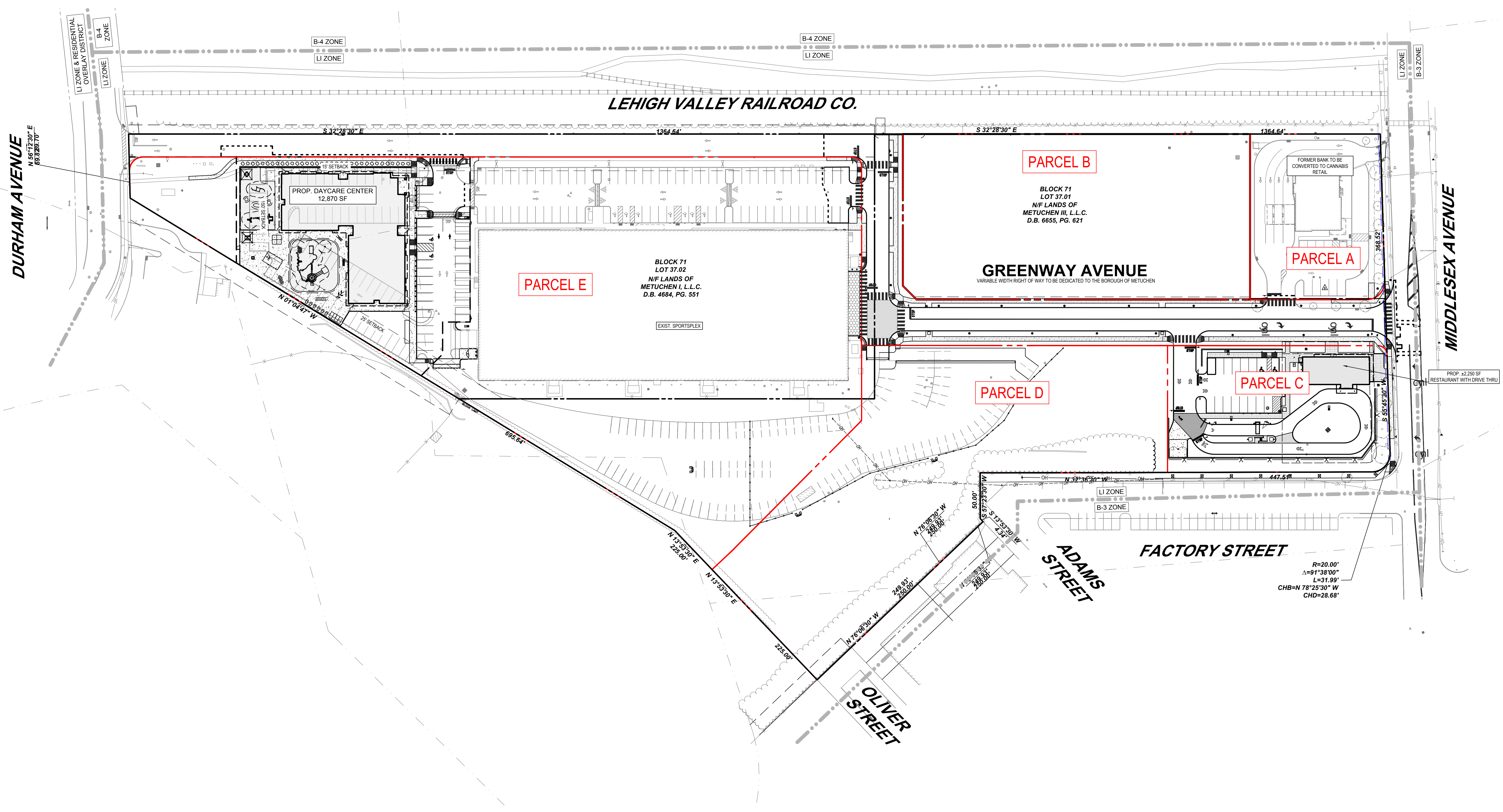
BOHLER
 BOHLER ENGINEERING LLC
 10000 MIDLANTIC DRIVE, SUITE 410W
 MOUNT LAUREL, NJ 08054
 Phone: (856) 930-4000
 Fax: (856) 930-4001
 www.BohlerEngineering.com
 LICENSE: OF ARCHITECTURE, PROFESSIONAL ENGINEERING & LAND SURVEYING

A. TAMOUS
 PROFESSIONAL ENGINEER
 NEW JERSEY LICENSE No. 46184
 PENNSYLVANIA LICENSE No. 73909

SUBDIVISION EXHIBIT

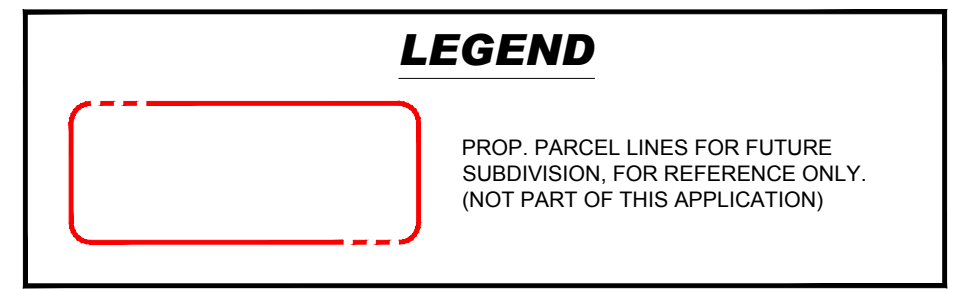
SHEET NUMBER:
1

REVISION 1 - 1/26/2024



OWNER (LOT 37.01):
 METUCHEN III, LLC
 C/O THE MAVEN GROUP
 4905 DEL RAY AVENUE,
 SUITE 200
 BETHESDA, MARYLAND 20814

OWNER (LOT 37.02):
 METUCHEN I, LLC
 C/O THE MAVEN GROUP
 4905 DEL RAY AVENUE,
 SUITE 200
 BETHESDA, MARYLAND 20814



G:\2016\JM1607152\CADD\DRAWINGS\EXHIBIT\SUBDIVISION\EXHIBIT\JM1607152-SUB-E-1A-CADD\JOB1 - SUB