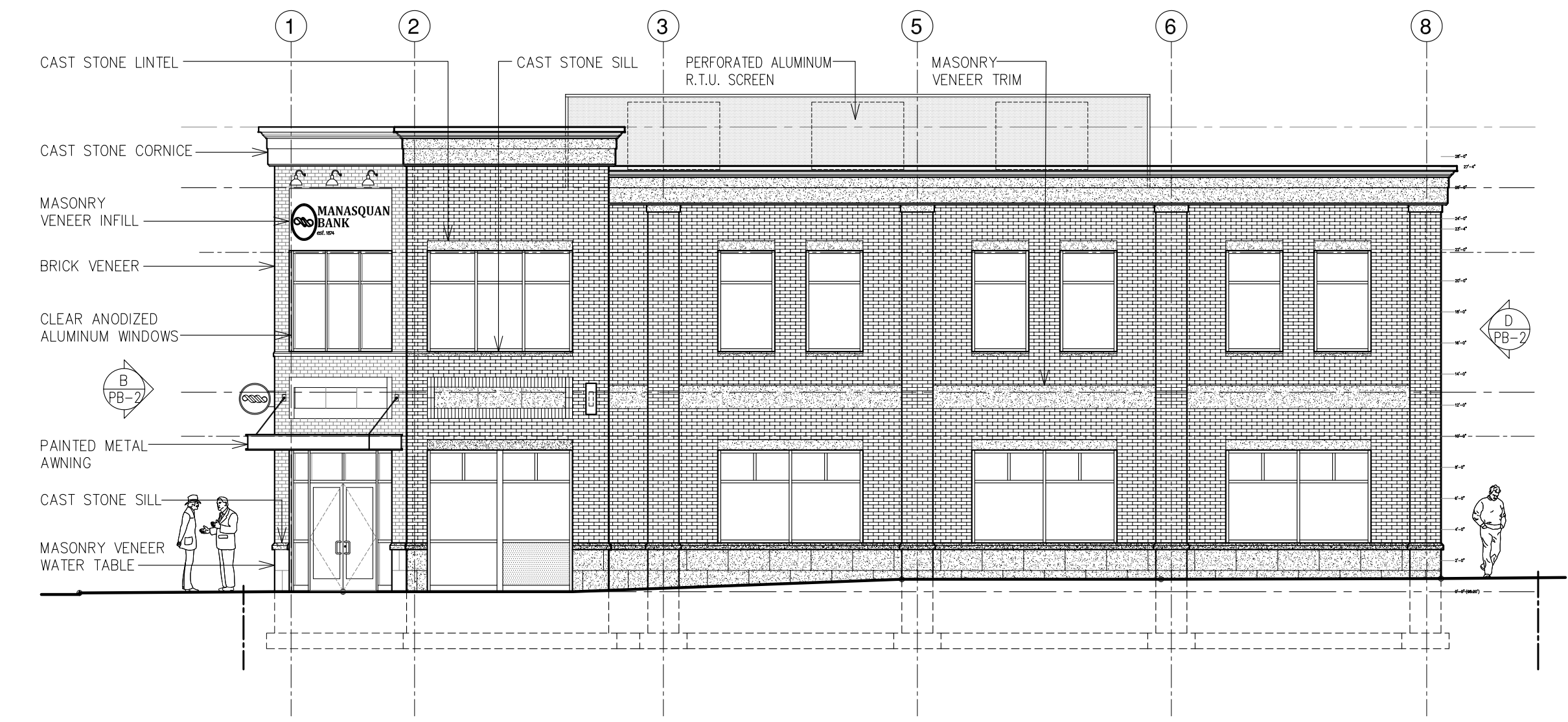
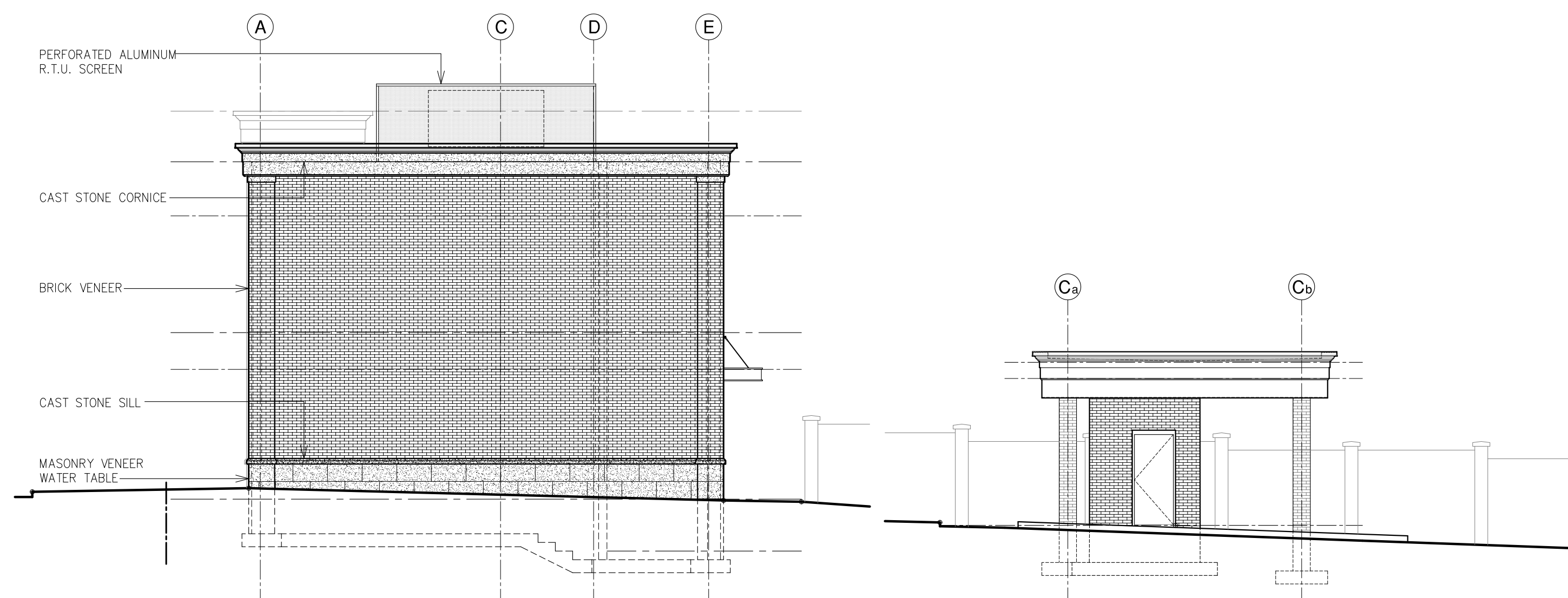


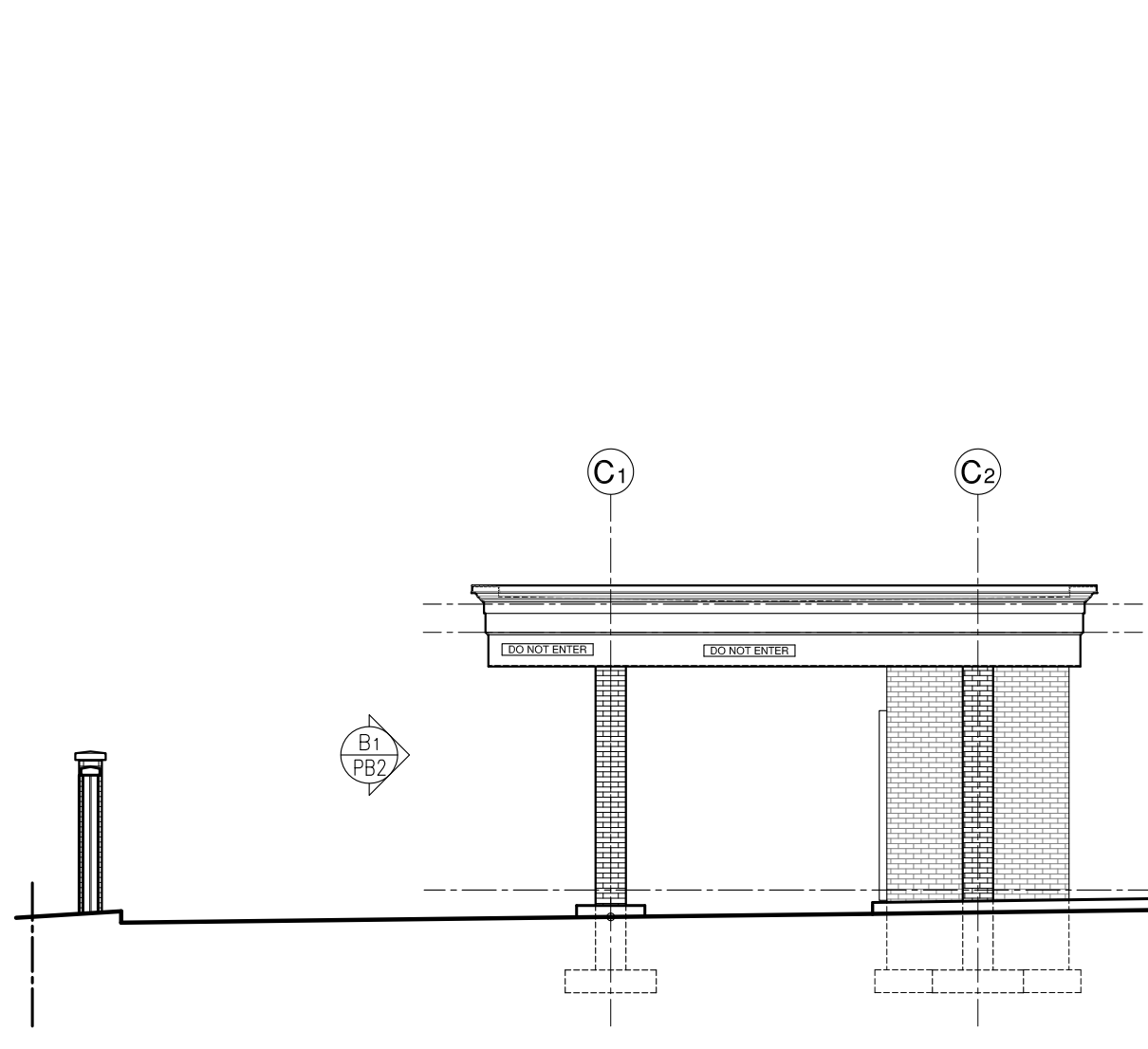
B SOUTH ELEVATION (NEW STREET ELEVATION)
SCALE: 1/8"=1'-0"



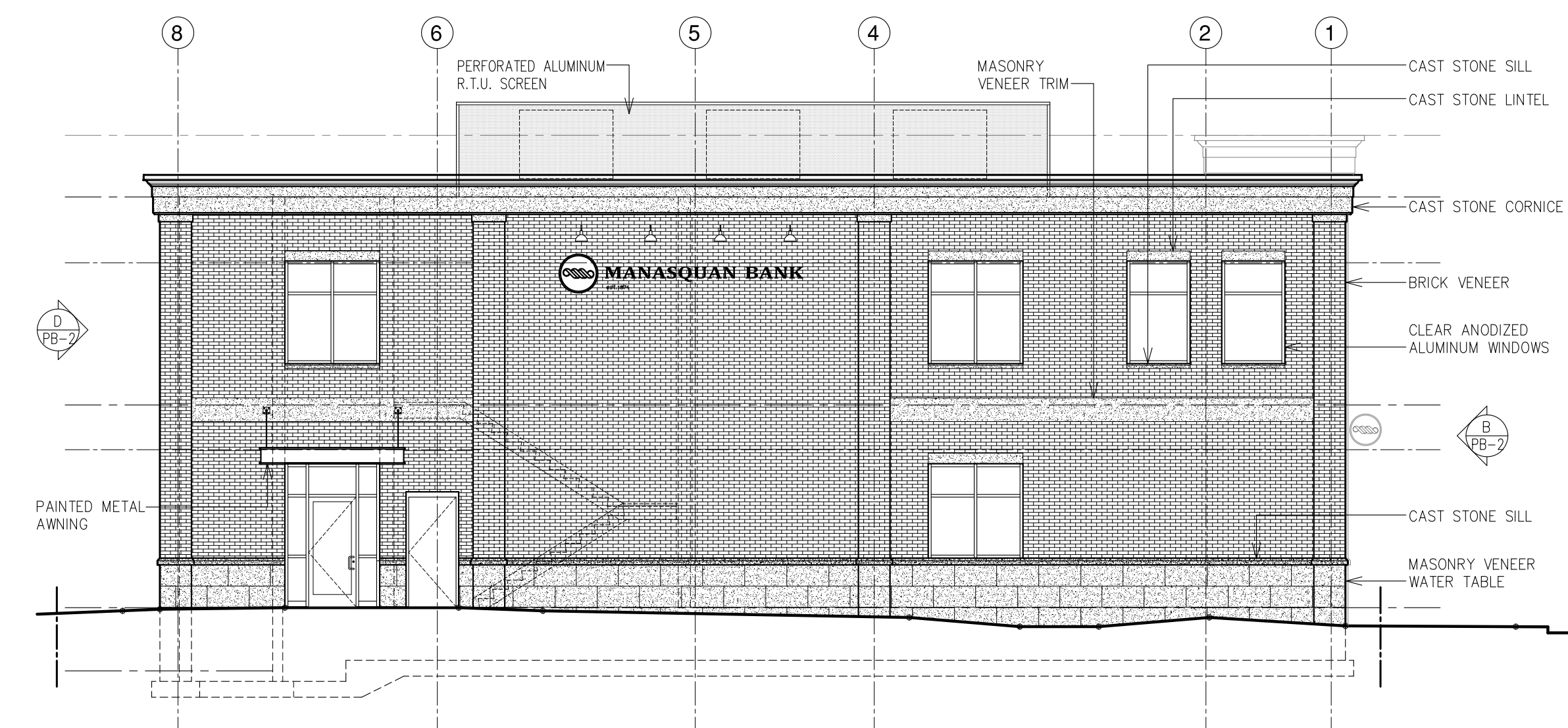
A EAST ELEVATION (MAIN STREET ELEVATION)
SCALE: 1/8"=1'-0"



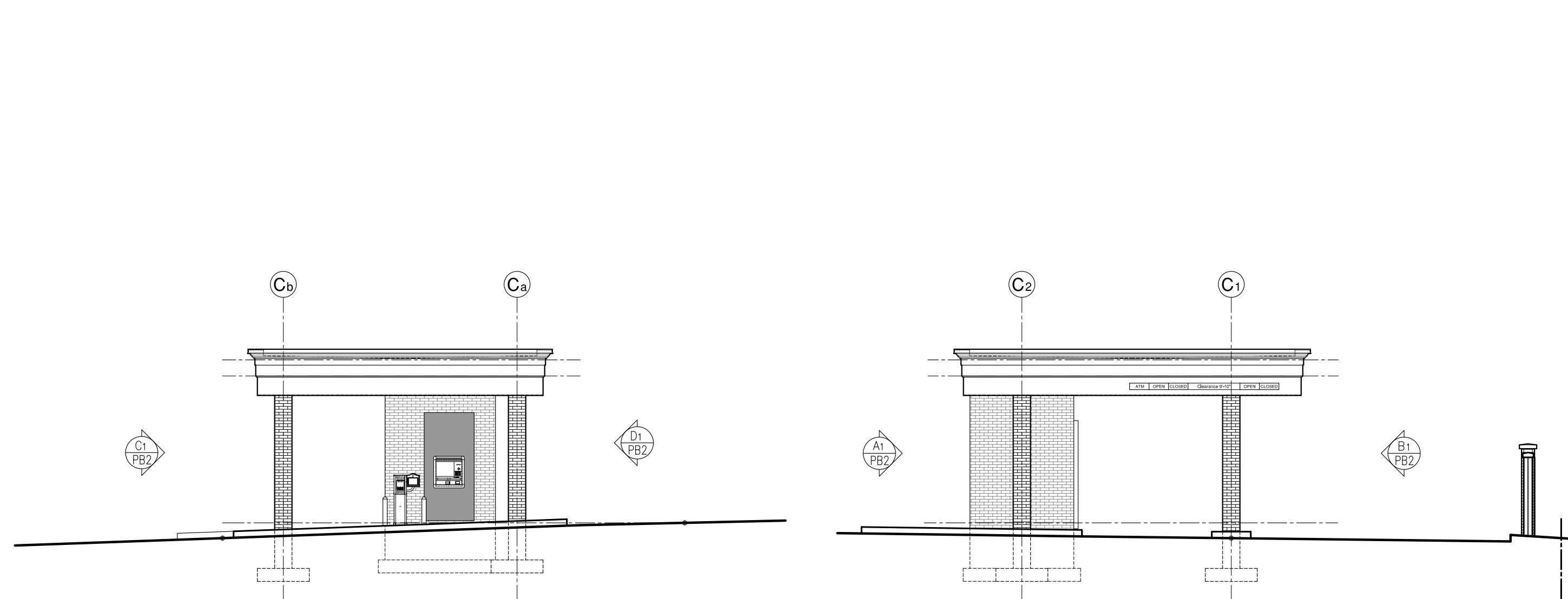
D NORTH ELEVATION
SCALE: 1/8"=1'-0"



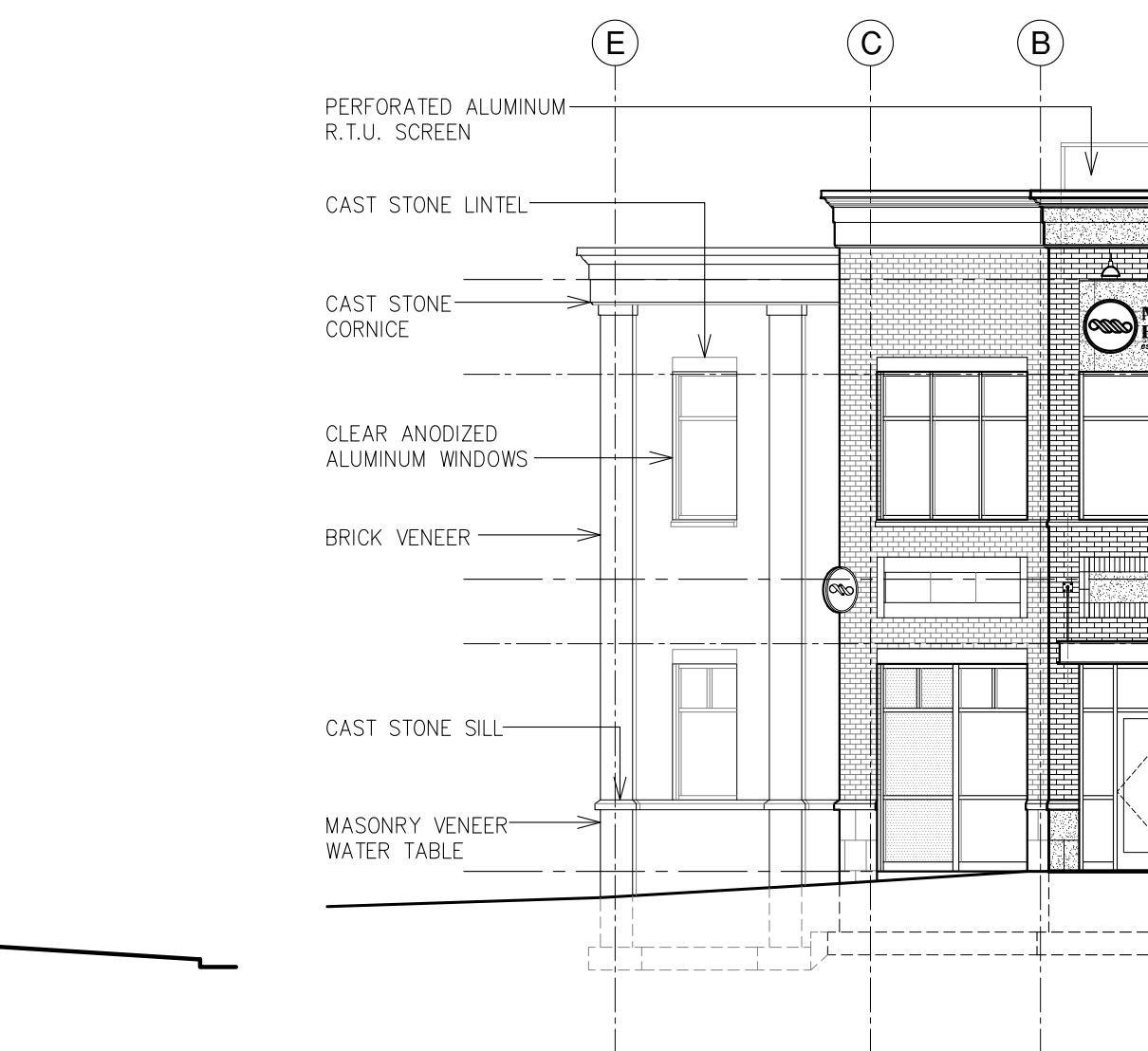
A1 CANOPY NORTH ELEVATION
SCALE: 1/8"=1'-0"



C WEST ELEVATION
SCALE: 1/8"=1'-0"



B1 CANOPY SOUTH ELEVATION
SCALE: 1/8"=1'-0"



C1 CANOPY WEST ELEVATION
SCALE: 1/8"=1'-0"



E SOUTHEAST ELEVATION (CORNER ELEVATION)
SCALE: 1/8"=1'-0"

REVISION	DATE	DESCRIPTION	BY

MANASQUAN BANK <small>est. 1874</small> NEW BRANCH BANK BUILDING 429 MAIN STREET METUCHEN, NEW JERSEY	LONGO ARCHITECTS & ASSOCIATES LLC <small>0600354910</small> WILLIAM R. RYAN, JR. AIA AI-09943 VINCENT F. WOLK AIA AI-11675	98 SOUTH STREET NEW PROVIDENCE, N.J. 07974 TELEPHONE (908) 464-9300 FAX (908) 464-3123
ARCHITECT <i>Vincent F. Wolk</i>	DRAWN BY MCB	CHECKED BY VFW
CERTIFICATE NUMBER AI-11675	PROJECT NUMBER 18108	DATE 2/24/21